

Monday, April 01, 2019
9:30 a.m.
Historic Courthouse Room 212
940 N Boonville, Springfield, MO

Upon roll call the following Commissioners were present: Commissioners Bob Dixon, Harold Bengsch and John Russell.

Commissioner Dixon called the session to order. Commissioner Dixon led the Pledge of Allegiance and prayer.

Commissioner Bengsch moved to approve the minutes of the March Commission session as presented. Commissioner Russell seconded the motion and it was unanimously approved. Aye: Dixon, Bengsch and Russell Nay: none Abstain: none Absent: none.

City Manager of Strafford Steve Bodenhamer provided the Commission with a city highlight. Strafford was founded in 1871 and was considered a railroad town. The City of Strafford remained unincorporated until 1961. Strafford is an economy based city based on the movement of freight. Taxable sales reach 45million. Bodenhamer explained that in the future Strafford will grow in logistics. Strafford is hoping to build an industrial park and attract large logistical companies to the complex.

Brian Weiler Director of Aviation at the Springfield-Branson National Airport provided the Commission with updates. The airport has seen tremendous growth and broke over 1 million passengers in 2018. 40% growth over the last 5 years. YTD for 2019 there has been another 8% growth. Weiler explained there has also been growth at General Aviation and in 2016 new corporate hangers were constructed. OTC has introduced a new aviation program, and Weiler was hopeful of job opportunities it will create. Weiler also explained of internal upgrades to the airport which included a new restaurant in 2018, better WIFI and charging stations.

Matt Morrow with the Springfield Chamber thanked the Commission for the Transparency Portal. Morrow updated the Commission that there is expected growth in the Springfield area of up to 64 million in new payroll, 75 million in capital investments. Morrow explained that 3% employment rate is what the area is currently at and that is considered full employment. Morrow explained that the Chamber is optimistic for the election on 04/02.

Missouri Job Center update was given by Katherine Trombetta. Ms. Trombetta informed Commission of the second forum for legalization of pot and the effect on the workforce forum which will take place at the Art museum from 9-4. Upcoming event called Green for Greene which will be a 5 week training that will provide the people who complete the training with 13 certificates in the environmental based field. Build my future event will take place on 04/17 an estimate of 2700 high school students from over 100 high school students will attend.

Missouri Extension Center Report Update was provided by Dave Burton.(Exhibit 1) Burton distributed to the Commission the monthly newsletter. Burton highlighted some of the upcoming programs in April. Burton stated that the Extension office has had an uptick in new clubs and that this was the first uptick the Extension office has seen in over 10 years.

Top Branch Awards were presented to the following employees:

GCSO Lisa Simmons and Pre Trail Officer Stephanie Hamilton.

County Administrator Chris Coulter gave staff updates that included the reminder that Chris Mericle Purchasing Director has sent in a resignation letter and that HR will post for the job soon. Pretrial will be conducting interviews in the next couple weeks for the supervisor position. Coulter is hopeful that the Medical Examiner position will be filled soon.

Highway Director Rick Artman presented the Commission with the March monthly report. (Exhibit 2) Artman went on to highlight various projects from: District 1 crew, District 2 crew, county wide maintenance crew, and special project crew. Artman updated on shop and warehouse and parts department.

Director of OEM Larry Woods provided the Commission with the March End of the Month Report. (Exhibit 3) Woods highlighted the report. Some highlights included: participation in the statewide Healthcare Coalition tabletop drill. Conducted 10 tours in the month of March for a total of 313 people. Attended the 2019 seasonal integrated weather team workshop.

County Geologist Matt Forir gave an update on projects that he is currently working on which included a project in the Pearson creek area to investigate mines. 911 Geo hazard map is nearing completion. Forir also explained that with all the rainfall there will be lots of new sinkholes reported.

Planning and Zoning Director Kent Morris provided report to Commission for planning and zoning and building regulations. (Exhibit 4) Morris highlighted each report.

Dixon read brief legal statement before the zoning cases.

I. OLD BUSINESS

II. NEW BUSINESS

1. Case number 2048 was withdrawn this morning and was not heard.
2. Request Rezoning, Planning board Case number 2049, Brian Powell, applicant. Applicant requested to rezone from Agriculture to Agriculture Residential, looking to create a subdivision. The Planning Board on 3/19 recommended 6-0 approval for this case. Brian Powell spoke in favor of this case, no one spoke in opposition. Commissioner Harold Bengsch moved to approve case number 2049. Commissioner Russell seconded the motion and it was unanimously approved Aye: Dixon, Bengsch and Russell. Nay: none Abstain: None. Absent: None

II. OTHER BUSINESS

Public Comment: None.

exl

UNIVERSITY OF MISSOURI
Extension
 Greene County

2400 S. Scenic Ave.,
 Springfield, Mo. 65807
 Email: burtond@missouri.edu
 Tel: (417) 881-8909

Reaching Out Report

*April 2019 * Vol. 12 Issue 4*
 Monthly Newsletter of Greene County Extension

Upcoming Council Meetings

Monday, March 25
 — Botanical Center, \$5 meal, guest speaker: Kelly McGowan, update on Master Gardeners of Greene County.

Monday, April 29 — Botanical Center, \$5 meal, guest speaker: Bill Prince, director of Greene County Juvenile office

TUESDAY, May 28
 — Botanical Center, \$5 meal, guest speaker: Tim Schnakenberg, agronomy specialist, on past and future ag programs.

Monday, June 24 — Botanical Center, \$5 meal, guest speaker: TBA

Subscribe Now!

Become a subscriber and receive a monthly email with the direct link for reading the "Reaching Out Report" online. Subscribe on our website.

Sponsor Needed

For \$100 you can sponsor the monthly distribution of this newsletter to county libraries in Greene County and be recognized in this newsletter.



Recognition Culture Begins; Learn More With a Novack Book Study

As part of creating and encouraging a recognition culture, Greene County MU Extension employees are recognizing the efforts of other extension staff, specialists serving the county, and council members in creative ways. We started the tradition of recognition on March 19 with a well-deserved recognition of Sarah Grubaugh, administrative assistant in the regional office located in Springfield (left side of the above photo). "Her behind the scenes work and dedication allows everyone in the Southwest region to succeed every day," said Kelly McGowan, horticulture specialist.

Organizations or businesses that want to learn more about creating a recognition culture and how it can be used to develop a functional team, should contact the Greene County Extension office about a book discussion or presentation on one of David Novack's books (like "O Great One") that addresses the subject of recognition.

Learn more at www.facebook.com/greencountyextension

University of Missouri Extension is an equal opportunity/ access/ affirmative action/ pro-disabled and veteran employer.

County Engagement

Growing Leaders: EXCEL Update

Over 50 people are now enrolled in the Greene County MU Extension leadership development program known as EXCEL. Registration is free, and available on our website.

EXCEL enrollees will get a discounted rates for our Brown Bag University program. But EXCEL also offers flexibility and unique ways to get hands-on training in leadership.

One goal for 2019 is the establishment of a Ash Grove EXCEL program for residents of that community.

The mission of this program is to make Greene County a better place to live by creating better community leaders.

EXCEL is designed to provide leadership education for emerging leaders that can improve their community and help them become a better employee or business owner by learning about and engaging with local issues and needs.

Get Ready for Spring!

Get help with your lawn and garden by calling the Master Gardeners of Greene County hotline at 417-874-2963. The MU Extension Vegetable Planting Guide is available for free on the MU Extension website along with instructions on how to collect soil for testing your lawn, garden or field.

Apply for a Free Energy Audit

In over ten years of operation, one University of Missouri program has saved Missouri industries nearly \$65 million or on the average of about \$50,000 per year in energy costs. The Midwest Industrial Assessment Center (IAC), located in the Mechanical and Aerospace Engineering Department at the University of Missouri, provides a free opportunity for an energy assessment or audit of companies. Learn More and apply for an industrial energy audit on the Greene County MU Extension website.

KOLR-TV10 Mid-Day Schedule

For decades, University of Missouri Extension specialists have appeared on KOLR-TV10 mid-day show.

Every Thursday, Horticulture Specialist Kelly McGowan provides information related to lawns, gardens and growing things.

Every other Monday, MU Extension specialists appear on a variety of topics. These are the interviews are coming up:

- Monday, April 1, David Burton: "Laugh for Health of it."
- Monday, April 15, David Burton: Upcoming Programs."
- Monday, April 29, Karla Deaver: "4-H Youth Camps"
- Monday, May 13, David Burton: "Programs & Resources"

2019 Goals and Drivers for Improved Impact

DRIVERS FOR 2019	2019	Goal	Pert	2018	2017	2016
Soil tests	47	400	12%	377	359	370
Total Registrations	640	1,000	64%	1,108	1,162	744
Total Donors	18	110	16%	58	91	68

10-Year Goals and Vision Progress Report

Greene County MU Extension will help county businesses create or save 5000 jobs, individually educate 500,000 county residents on topics improving their families, farms, and nutrition, and train 1,500 new community leaders and volunteers by 2030.

Category	YTD	Goal	Progress
Jobs Created/Retained	1444	5000	29%
Individuals educated	84844	500000	17%
Leaders/Volunteers	236	1500	16%



UNIVERSITY OF MISSOURI
Extension
Greene County

*Invest in yourself
with this fun
leadership series!*

BROWN BAG UNIVERSITY

Thanks to Our Presenting Sponsors



George Deatz Family



Invest in Yourself Professionally Grow as a Leader

Register now for our **Brown Bag University** series.

Our specialists — Dr. Amy Patillo and David Burton — are offering four noon-time programs to grow your leadership skills and improve your workplace.

Classes are from 12 noon to 1:30 p.m. Both seated classes will be held at the MU Clinical Campus at 1845 S. National, Ste. 100, Springfield.

Cost is \$250 per person for the series. Payment needed prior to first class. Drinks and materials provided. Enroll in our EXCEL leadership program to receive a code for 50% off this class for you and a friend.



Patillo



Burton

Classes in this series are:

- **April 30 (seated)** - "Choosing Workplace Stability Over Exhausting Drama." Learn how to deal with employee drama and set yourself on course for workplace stability.
- **May 8 (online)** - "Hello, I'm Busy." Online class about setting priorities and managing time. This class is not for people who say, "I'd love to, I have nothing else to do."
- **May 14 (seated class)** - "Made to Stick," book discussion on creating and developing ideas at the Republic Library. Read the book ahead of time, learn even more in discussion.
- **May 22 (seated class)** - "Building Gossip Free Zones By Communicating with Professionalism." Learn now to stop the top creator of office negativity: gossip.

Greene County MU Extension

2400 S. Scenic Ave., Springfield, Mo. 65807

Register by telephone at (417) 881-8909 or

online at <http://extension.missouri.edu/greene>

County Extension Council

MINUTES OF THE UNIVERSITY EXTENSION COUNCIL OF GREENE COUNTY

Date: Monday, February 25, 2019

Place: Springfield-Greene County Botanical Center, 2400 S Scenic Ave, Springfield

Attendees: Larry Adams, Tony Ahart, Morgan Ash, Lisa Bakerink, Harold Bengsch, Greg Boehne, Chad Courtney, Karen Dowdy, Misse Hayworth, Joseph Hoffman, Chris Schulze, Scott Smith, Rick Stenberg and Jason Whitesell and Lauren Waterman

The meeting was called to order at 12:06 pm, by Council Chair, Jason Whitesell, who welcomed those in attendance, the new Nutrition Specialist, Kelsa Ferguson, new council members and the Pledge of Allegiance was recited. Secretary Morgan Ash called roll and it was determined that a quorum was present.

Consent Agenda: A motion was made by Harold Bengsch and was seconded by Joseph Hoffman, to approve the Consent Agenda including the November meeting minutes, the closed session minutes, the December 4-H candidate presentation minutes and the November Treasurer's report and bills to be paid for the month. Motion to approve passed by unanimous vote.

Staff Reports: Kelly McGowan has 33 new Master Gardeners in training. The Blueberry School this weekend was very successful and the booth at the Lawn and Garden Show went well. Amy Patillo is working on a 4-H spring break collaborative. March 11-14th, help is needed with a 20-30-minute activity. Renette Wardlow has 3 new chronic disease self-management workshops set up in the coming months. Sherri Hull has a few upcoming youth sessions on nutrition. Maggie Black reminded everyone that it is soil testing time.

Council Youth Representative Report: The 4-H talent show is very well attended and a bigger venue is needed. The Greene County team is going to help with the upcoming Master Gardener plant sale this year.

CES Report: Strafford Chamber of Commerce meeting is March 10th. Please join the Facebook page to keep informed. This is the last chance to register for the MU and You conference in Columbia on March 28 and 29.

- **MU Students:** MU student alternative break is coming to Springfield on March 15-17 and working at Ravenwood Senior Living and at Ronald McDonald House.
- **Service Day:** The first annual Mizzou Alumni Service Day on April 12-13, is going to include Extension Council and will be led by alumni.

Unfinished Business/Committee Reports:

Input on Specialist Reviews: Copies of the feedback received for annual reviews was shared and discussion invited. A motion was made by Morgan Ash and was seconded by Joseph Hoffman, to accept and to submit the Specialist annual review comments. Motion to approve passed by unanimous vote.

Feedback on Annual Meeting: The suggestion to improve venue lighting was made. There was a great turnout and the tables were filled. Council had the highest turnout. The local office of the medical school may get involved next year.

New Business:

Part-time Help: Committee involvement is needed. Please let David Burton know if you know of anyone who may be interested in working 8 hours per week on Excel and 4-H paperwork. The hire will also cover Maggie. The interviews will be held with the Personnel Committee. Advertising will be done through

Council Extension Council

the colleges for a potential employee.

2019 Council Officers: Nominations from the Nomination Committee were solicited, as well as from the general floor. Nominations to keep the current officers, who indicated their willingness to serve were made as follows: Chair = Jason Whitesell, Treasurer = Lisa Bakerink and Secretary = Morgan Ash

A motion was made by Chad Courtney and was seconded by Joseph Hoffman, to approve the above nominees as officers. Motion to approve passed by unanimous vote.

A nomination was made for Greg Boehne to serve in the vacant officer position of Vice Chair.

A motion was made by Jason Whitesell and was seconded by Joseph Hoffman, to approve Greg Boehne as Vice Chair. Motion to approve passed by unanimous vote.

Educational Program: Sarah Havens, Natural Resources Engineering Specialist, who is stationed in Phelps County provided information on her new position with Extension. Programming on forestry and naturalist education topics are

2019 Officers

Jason Whitesell, chair
Greg Boehne, vice-chair
Lisa Bakerink, treasurer
Morgan Ash, secretary

generally offered. The Woodland Steward Program is offered to adult landowners in Missouri and includes information on marketing timber, women woodland owners, healthy yards for clean streams, and invasive species presence. Kids' program-

ming includes sessions on conservation, forest products and natural resources. She will be teaching a logging school session on best practices, timber management and on safety as a joint effort with the Missouri Department of Resources and other entities.

Joseph Hoffman moved to adjourn the meeting at 12:52 pm and Rick Stenberg seconded the motion. The idea passed unanimously.

Respectfully submitted by Morgan Ash

Program Calendar Online

The most up-to-date list of reported upcoming

MU Extension programs in Greene County is available online at <http://extension.missouri.edu/greene>

Calendar visible on right side of page.

"Presenting Sponsors" for Greene County Extension

These financial partners have contributed an annual sum to make it possible for MU Extension to continue offering local programs and services in four impact areas: agriculture and the environment, youth and families, business and community development, and nutrition and health.



Your Business
Logo Here
Sponsors needed



Agriculture and Environment

Grow Your Community Garden Workshop

In 2018, Friends of the Garden, through their garden sponsorship program, facilitated a 3-year, \$15,000 garden sponsorship from Great Southern Bank for the Master Gardeners of Greene County Demonstration Garden. This garden in the Springfield Botanical Garden helps carry out the Master Gardener mission by displaying plants that do well in the unique climate of southwest Missouri.

As a follow-up to this sponsorship donation, Friends of the Garden coordinated a "Grow Your Community Garden" workshop on March 1. Community garden education was a need identified by Great Southern Bank and this workshop attracted 30 community garden leaders, members and interested groups from around the southwest region.

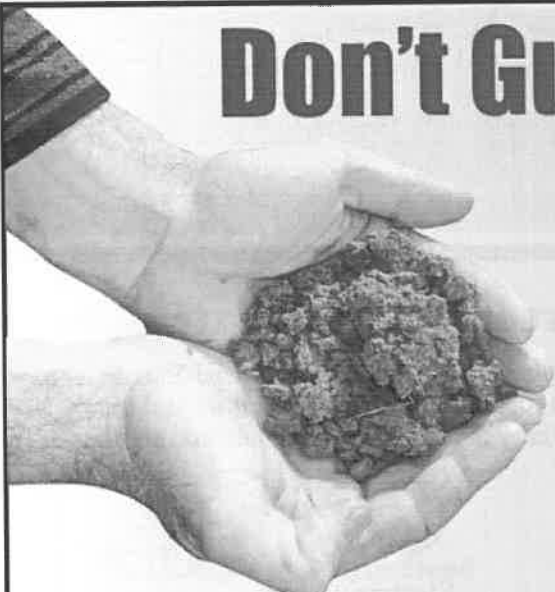
Topics included beginning vegetable gardening, food safety in community gardens and a chance to hear from two local

community garden leaders about their successes and challenges. The post-workshop feedback was very positive and included the following impacts on the workshop evaluation:

- This workshop gave me the confidence to try gardening on a small scale
- It was great to learn ideas for building a better community garden!
- This workshop was a learning experience on many different aspects! Excellent!
- Great speakers!
- This was a great class!
- The entire workshop was exceptional
- Lots of great information that I will take back to my community garden



Kelly McGowan
Horticulture Specialist
mcgowank@missouri.edu



Don't Guess, Soil Test

Now is a great time to get a soil test done at the Greene County Extension Center.

GROW HEALTHIER PLANTS
A soil test shows exactly how much lime and fertilizer your plants need.

PROTECT OUR ENVIRONMENT
Avoid excessive fertilizer use and guard against nutrient loss in runoff.

AVOID FRUSTRATION
Science-based analysis and unbiased recommendations let you escape hit-or-miss growing efforts.

SAVE MONEY
Buy only the fertilizer you need after getting a quality soil test.

ACHIEVE OPTIMAL GROWTH
Determines what your plants need for optimum health and growth.

University of Missouri Extension – Greene County
Located inside the Springfield-Greene County Botanical Center
2400 S. Scenic Avenue • Springfield, MO 65807
Telephone: 417-881-8909
Become a "Friend of Greene County Extension" online:
<http://extension.missouri.edu/greene>

FOR MORE INFORMATION
Visit "Soil Test Central" online at
<http://extension.missouri.edu/greene>

UNIVERSITY OF MISSOURI Extension
Greene County Extension Council

Agriculture and Environment

Master Gardener Plant Sale in Greene County is April 27

The 22nd Annual Master Gardener Plant Sale in Greene County will start at 8:00 a.m., Saturday, April 27, 2019, at the Springfield-Greene County Botanical Center located in Nathanael Greene/Close Memorial Parks, 2400 S. Scenic Ave., Springfield, and will continue until 1:00 p.m.

Members of the Master Gardeners of Greene County gather plants to sell from their own gardens- and from the two city gardens that Master Gardeners maintain in Nathanael Greene/Close Memorial Park and at the Xeriscape on South National- to sell at the Annual MG Plant Sale. Members also grow a diverse range of popular and heirloom plants from seed for the sale. Tomatoes, peppers, vegetables, annual flowers, culinary herbs, and medicinal herbs are all growing in our greenhouses and will be ready for your garden in just weeks.

People are advised to arrive early if they want the best choices of shrubs, small trees, bulbs, perennials, annuals, grasses, ground covers, houseplants, vegetables, herbs and garden related items. Master Gardeners will be on site to assist with purchases and answer questions. Cash, checks and credit or debit cards are accepted.

This fundraiser helps the Master Gardeners of Greene County maintain the public demonstration gardens and serve the public by providing quality lawn and garden programs as volunteers of University of Missouri Extension.

If you have questions or need more information about the sale, contact the Greene County Master Gardener Hotline at (417) 874-2963.

Annual Plant Sale



22nd Annual Master Gardener Plant Sale

SATURDAY, APRIL 27, 2019 | 8:00 A.M. - 1:00 P.M.

The Springfield-Greene County Botanical Center [\[MAP\]](#)
2400 S Scenic Ave, Springfield MO 65807



Master Gardeners potting up plants for the sale.

Agriculture and Environment

Headaches and Challenges Aside, Selling Beef Direct to Consumers Can Help Keep Families on the Farm

When it comes to selling beef on the farm, there are many different ways to achieve success and profit. This was the topic of a beef panel discussion on March 7 at the 96th Annual Greene County Ag Production Conference.

Each of the three panelists gave valuable insights on this topic of selling meat off the farm directly to customers.

David Middleton, who owns Middleton All-Natural Meats in Mt. Vernon with his wife Cherri, sells pork, beef, and chickens off the farm. He began when he discovered he could make more profit by processing and selling his beef direct to customers instead of at the live-stock barn.

"What we sell has changed over time based on customer demand and input," said Middleton. "I would say that discovering our niche was our largest challenge, but processing is our biggest headache."

Middleton says there is a shortage of USDA processing in the region, which means he has to plan ahead to meet seasonal demand for various cuts of beef.

Joann Pipkin and her husband Jim raise registered Angus with Jim's parents at Clearwater Angus Farm west of Springfield. The farm has been in the Angus business since 1933, and they have a strong reputation for selling high-quality bulls.

The Pipkins also process and sell beef from Angus yearling bulls off the farm that is grass raised and grain finished. They sell more ground beef than anything but will also sell a variety of individual cuts as well as a half or quarter beef.

"Selling beef out of the freezer, is a side-line business for us," said Pipkin. "We market



Beef panel (from left to right): Kelly McGowan, David Middleton, JoAnn Pipkin and Kassi Glassman.

the business strictly by word of mouth. Our meat is state inspected and it carries our label. This has become a nice outlet for us that provides additional income and a market for animals that don't make the cut for quality breeding stock."

Kassi Glassman and her husband Ian raise registered Simmental cattle for sale as show heifers and steers. The cattle that are not show quality go back into the herd as replacement females or go into their beef program. The majority of the cattle in the beef program — known as Blue Silo Beef — are steers.

"This gives us a second stream of income. We have diversified so both of us can stay on the farm we love," said Glassman. "We are in the infancy of our business. But, I do know that there is not just one way to do direct beef marketing. There are a lot of mouths to feed, and there is a high demand for local beef. People want to buy from someone they know and can trust."

Panelists also discussed pricing and marketing strategies, how to find a meat processor and the satisfaction of dealing direct with customers.

**A video of the panel discussions is
available online at
www.youtube.com/MUEExtension417**

Agriculture and Environment

Hosting Farm to School Garden Teacher Workshop April 8

Specific teachers in the Springfield Public School district will be participating in a Farm to School/School Garden Teacher training April 8 from 8 a.m. to 3 p.m. at the Springfield Botanical Center (MU Extension Center), 2400 S Scenic Ave., Springfield, in Nathanael Greene Park.

The training is a partnership between the Springfield Public Schools Farm to School Team and their Science Curriculum Department, MU Extension and Springfield Community Gardens. The goal is to equip teachers to successfully teach in an outdoor classroom.

The training day will include sessions on a variety of topics, as well as time for networking and sharing. Program topics include:

- Managing Volunteers for Garden Workdays
- Full Circle Gardening and Best Practices
- Engaging the Community
- Demonstration lessons from MU Extension's "Eating from the Garden" Curriculum
- Creating Pollinator Gardens
- 4-H and Youth Development in the Garden and More!



Private Pesticide Applicator Training Draws Over 30

Over 30 individuals (shown above) earned their required Missouri private pesticide applicator license in March at an afternoon training conducted by Tim Schnakenberg, agronomy specialist, University of Missouri Extension. The training was conducted at the Springfield Botanical Center and covered state rules as well as safety practices for applying pesticides. A license is required to purchase restricted pesticides. However, the license is only for personal use. A different license is needed for commercial application.



Apple Grafting Workshop Draws Over 30 Attendees

A program on grafting apple trees, conducted by MU Extension specialists Patrick Byers and Kelly McGowan, drew over 30 participants on March 22.

Different grafting techniques were demonstrated on Arkansas Black, Enterprise, Gold Rush, Liberty, Lodi and Ozark Gold trees.

Participants worked one-on-one with a Missouri State University or University of Missouri Extension employee while learning to graft.

This is always a popular program and draws attendees from outside the area.

Business and Community

Building Your Business Plan

When: April 11, 5:30 p.m. to 8:30 p.m.

Where: Missouri State's Robert W. Plaster Free Enterprise Center, 405 N Jefferson Avenue, Springfield

Description: Preparation is key to the success of any business venture. Whether you are starting a new business, growing an established business, or launching a new product or service, planning is critical. This seminar provides an overview of two approaches to business plans and the steps necessary to develop those plans.

Topics Include:

- Business success factors
- Business Model Canvas for a plan
- Five minutes, three crucial sections
- Sources for evaluating the market
- Target market identification
- How to develop basic financial projections
- Debt and equity funding options
- Writing techniques for lenders/investors



Visit www.sbtde.missouristate.edu or call 417-837-2617 for details or to register.

Cost: \$79.00

Facilitator:

Tara Horton
Email: tarahorton@missouristate.edu
Telephone: 417-837-2617

The SBDC is part of the MU Extension network of programs and partners.

Greene County a Case Study for Engagement

David Burton, county engagement specialist for MU Extension in Greene County, spoke to all MU Extension staff in Missouri during the Spring Institute (March 19) in Columbia and presenting Greene County Extension as a case study for the benefits of engagement.

Burton had been invited to speak at this year's event by Dr. Marshall Stewart, Vice-Chancellor for Extension and Engagement at the University of Missouri.

In his presentation, Burton outlined successes for the local extension program, the important role of the County Commission and the extension council in that success, the need to set priorities to reduce busyness in our lives so we can have margin for innovation, and the importance of sharing about the turn-around in Greene County with others.

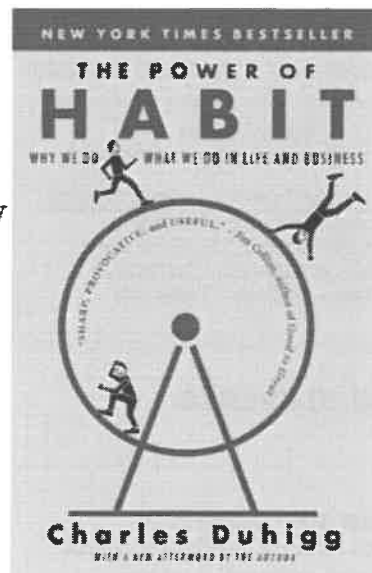
"As we seek to better engage our communities, let's keep a positive focus, keep our focus on what we do best which is working and engaging with our community to discover local needs and then improving people's lives with education," said Burton. "Leaders are dealers in hope."



Republic Leadership Book Discussions

This is a partnership between the Springfield-Greene County Library, Republic Chamber of Commerce, and Greene County MU Extension.

“Power of Habits: Why We Do What We Do in Life and Business,” by Charles Duhigg, discussion led by David Burton, at noon on April 11 at the Greene County Extension Center, 2400 S. Scenic Ave., Springfield. Learn about the habit loop (cue, routine, reward) and how to change your habits and to put this knowledge to work in your business or place of work. Habits influence a number of things we do from the music we listen to during the day to things do purchase. Learn how to make your products familiar so they are better accepted by customers. This book is full of valuable information.



“Made to Stick” by Chip Heath, discussion lead by David Burton, at noon on May 14, 2019, in the community room at the Library, 921 N. Lindsey Ave., Republic, MO 65738. Learn more about the six characteristics that make your ideas stick: simple, unexpected, concrete, credible, emotions and stories.

Yes, a book discussion is professional development!

- 1. Grow a network:** Want another way to connect? Joining our book club will help you learn and grow with community residents to help you improve your network.
- 2. Advance Your Career:** A book club can enhance your career on two fronts. First, the books you read may make you more effective in areas critical to success like leadership, communication and productivity. Second, the network you'll be building may help you with career advice, introduce you to new people and find your next job.
- 3. Reading is Good for You:** Did you know business people who read at least seven business books per year earn over 230% more than people who read just one book per year? A) Reading improves your intelligence, reasoning ability, and has been linked to reducing the chance of Alzheimer's. B) Joining our book club gives you the opportunity to read more and enjoy all the benefits that come with it.

Greene County MU Extension

Located inside the Springfield Botanical Center
2400 S. Scenic Ave., Springfield, Mo. 65807
Tel: (417) 881-8909 | <http://extension.missouri.edu/greene>



Extension
University of Missouri

For more information about these book discussions or the EXCEL Leadership Program contact David Burton, county engagement specialist, at the Greene County MU Extension office by email at burtond@missouri.edu on online at <http://extension.missouri.edu/greene>



417/466-3102
<http://extension.missouri.edu/lawrence>
deaverk@missouri.edu

March 2019

Karla Deaver
4-H Youth Development Specialist
2019 Greene Co 4-H Leader's Council
Jim Sontheimer, President
John Waterman, Vice-President
Sharon Giancola, Secretary
Dawn Huffman, Treasurer

UPCOMING EVENTS

MARCH

16-17 State Teen Conference
21 Greene County Leader's Council
22-24 Shooting Sports Leader
Certification Workshop
25 Lawrence County 4-H Council

APRIL

13 RATT trip
14 State Robotics Conference
20 Swine Camp
27 State Horse Bowl Contest
28 State Hippology Contest
28 Greene County Personal
Presentations Day

RATT Trip—Going to Kansas City!

Get ready to travel—Southwest Regional teens are headed to Kansas City for their annual RATT Trip! RATT stands for Regional Action-Packed Trip for Teens. This year we are going to Moon Marble Factory, Legends Outlet Mall and the Kansas City Zoo! This one day trip on April 13 is \$65 and includes tour bus travel, tickets for Moon Marble and the zoo, and \$5 for lunch.

Registration form for this trip can be found on the Greene County Extension website under the 4-H link.



Dear 4-H Families:

For those of you who are new, welcome to 4-H! The newsletter contains dates of upcoming events, important deadlines, and information on regional and state events. If you have questions, call or email. I also post a lot of information on the Greene and Lawrence County 4-H Facebook pages, so if that is more your style look for it there as well!

Lots of exciting events are on the schedule for the next few months that are designed to help support you in your project efforts! See the information about upcoming workshops for swine, dairy cow camp, and more! Looking for a great social outing with other 4-H teens? Check out our annual RATT trip itinerary.

Don't forget to sign up for State 4-H Congress, scheduled for May 29, 30 and 31. This is our biggest state gathering for 4-H members age 14 and over. This is where our state 4-H council is elected.

4-H camp registration, camp counselor applications, and more will be coming out soon. Dates are listed below. If you are a project leader and need help, please don't hesitate to call or email. We have lots of resources for new project leaders.

As always, if you have questions or concerns, please do not hesitate to call, text or email me. My goal is for each and every family to have a positive 4-H experience.

Inspiring Kids to Do,

Karla Deaver
County Engagement Specialist in 4-H Youth Development

Don't forget to "like" us on Facebook!

Greene County 4-H can be found here: <https://www.facebook.com/greencountymo4h>

4-H Online is Now Open

Now is a great time to get enrolled for the new year! Help guides are posted on the 4-H online site. If you need assistance, call or email! Karla Deaver, 417-466-3102, deaverk@missouri.edu.

2019 4-H Camp Dates

May 1 Camp Counselor Applications due
T-shirt designs due
June 8-9 Counselor training
June 9-12 Member Camp 1
June 12-15 Member Camp 2
June 15-16 Clover kids Camp
June 16-20 Teen Camp

Camp Theme—4-H Around the World~!

4-H Move Across Missouri (MOVE)

It's time to MOVE! As you know, MOVE promotes physical activity and encourages youths to engage in a broad range of activities like walking, biking, running, swimming, dance, taekwondo, gardening and more.

The competitive period is from February 1 to April 30. There is no pre-registration required. Here's what youth and adults need to do to participate:

- Enroll in the Move Across Missouri (MOVE) project (HF775) in 4HOnline in their profile. *Enrollment in 4-H MOVE does not count as a part of county limits on projects.*
- From Feb 1 through April 30: Using a paper tracking system found on the 4-H website at: <http://4h.missouri.edu/4hmove/moveinfo> youth and their families can "log" the number of minutes they accumulate throughout the year and during the competitive component of the MOVE program (scroll to the bottom of the website page and click "My Move Activity Log"). Record keeping through the paper tracking system is important because the competition period is from February 1 to April 30.
- 4-Hers and adults can register for the competitive event as individuals and/or as part of a team. An individual MOVER may also be a part of a team. A team can consist of a family or members of a 4-H club or group.
- From April 30 through May 14: Youth and families will submit their total number of minutes logged throughout the competitive period in 4HOnline. The final reporting will take place inside of a no cost event registration that will only be open from April 30 and May 14.

MOVE awards will be provided!
For more information about 4-H MOVE visit -
<http://4h.missouri.edu/4hmove/main>

Save the Dates

State Shoot Dates:

August 17: **State Skeet Shoot** at the Gateway Gun Club

August 24: **State Trap Shoot** at the Missouri Trapshooters in Linn Creek

August 24-25: **State Archery 300** at Prairie Grove Shotgun Sports in Columbia

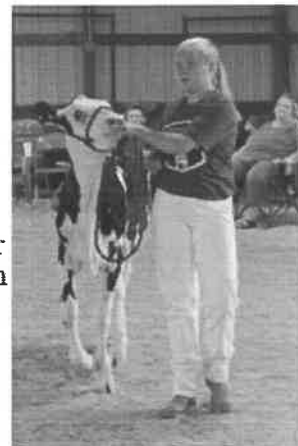
Sept 7-8: **Western Heritage State Shoot** at the Saline County 4-H Range

Sept 21-22: **State Shoot** in various places

Updated rules for the state shoot are on the webpage at: <http://4h.missouri.edu/shooting-sports-events/state-shoot>

Dairy Cow Camp Prepares Future Dairy Leaders

Youth ages 8-18 interested in learning about the dairy industry will want to register for 4-H Dairy Cow Camp, scheduled for May 22-24. After more than 20 years at the previous location, the camp is now in its second year at the Lawrence County Youth Fair Grounds in Freistatt.



Campers work in pairs under the direction of adults and take part in workshops to learn about judging dairy animals, dairy management, animal care ethics and showmanship. Persons working in the dairy industry visit with campers about careers.

Participants at the 2019 cow camp will be certified in the Show-Me Quality Assurance program. The primary goal of the program is to increase the knowledge and awareness of Missouri youth about food quality issues related to animal production. A judging contest and showmanship competition wrap up the camp.

4-H Dairy Cow Camp is a cooperative program between University of Missouri Extension and a number of industry sponsors. The registration brochure may be found at <http://extension.missouri.edu/lawrence>. For more information, contact Karla Deaver at the Lawrence County Extension Center in Mt. Vernon, (417) 466-3102, or your local county extension center.



4-H Spring Break Camp Provides 34 Hours of Instruction

The first 4-H Spring Break Camp at the Springfield Botanical Center was a great success, with over 14 volunteers — including County Commissioner Harold Bengsch — contributing their time and expertise. Participating students actually received over 34 hours of instruction. Justin Kastning, youth program associate in Greene County organized and led the camp. The goal is to expand the camp offerings next year for more 4-H'ers.

SWINE CAMP 2019



Open to all 4-H and FFA
Members



**SATURDAY
APRIL 20
9 AM TO 3 PM
OZARK EMPIRE
FAIRGROUNDS**

**Bring Your Own
Animal**

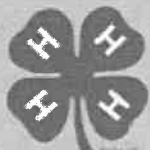
**Registration must
be received by
April 12**



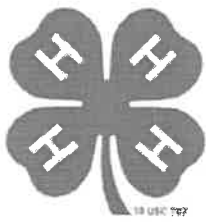
**Join the fun as industry experts share their expertise on
project animal selection, health, feeding and nutrition,
grooming and showmanship.**

Registration is \$20 per person
which includes lunch. Parents are
encouraged to stay but are asked
to pay \$5 toward lunch

To register, complete the attached
form and send to: Justin Kastning,
Greene County Extension, 2400 S
Scenic Avenue, Springfield, MO 65807



Sponsored by Greene County 4-H



GREENE COUNTY 4-H PERSONAL PRESENTATIONS DAY

Give a Speech
Test your project knowledge
Demonstrate Something
You Have Learned

Dress for Success

And share about Health and Hygiene

Sunday, April 28, 2019

**Karls Hall, Missouri State University
950 South Carrington Avenue
Springfield, MO 65897
Parking in lots 22 or 24**

Youth and Families

Greene County Licensed Child Day Care Providers Attend Training: "Dealing With Difficult Children"

All licensed providers in Missouri are required to participate in a minimum of 12 clock hours of training each year. University Extension faculty provide some of the needed training. Dealing with challenging behavior in preschool children can be a daunting task. Coping strategies are what is needed: Coping strategies to help the children AND coping strategies to help yourself!

"Building Positive Self-Esteem"

Self-esteem comes from positive self-imaging, and it is something that we proactively

build for ourselves. Self-esteem does not happen while we wait passively. When we leave it up to external factors, we build our self-esteem on sandy ground. What we want is a rock-solid foundation, and this only comes from

building it within.

The new program between 4

-H and the juvenile courts is a great place to talk about the importance of a solid, self-esteem. The youth in the program participated in an exercise to help them begin to build self-esteem from within themselves.

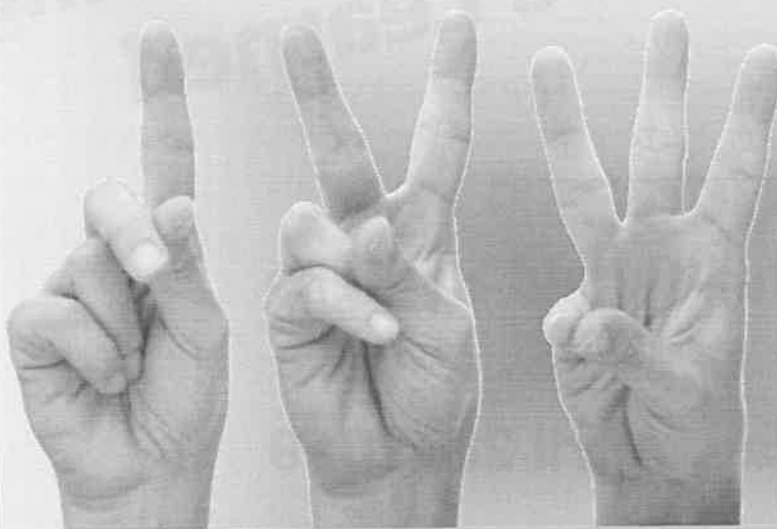


Renette Wardlow

Human Development
wardlowr@missouri.edu



Donating to *Greene County Extension* is as Easy As:



1. Donate online at
extension.missouri.edu/greene
by mail or in person.

2. Stay connected with
Greene County Extension
on social media, by email and/
or in service as a volunteer.

3. Enjoy making a difference
in the lives of 45,000 county
residents annually.

Helping Greene County Extension Do More, Reach More, Be More!

University of Missouri Extension in Greene County

Located inside the Botanical Center at 2400 S. Scenic Ave., Springfield, Mo. 65807

Tel: (417) 881-8909 | Email: greeneco@missouri.edu | Online at <http://extension.missouri.edu/greene>



Free pesticide collection for Missouri farmers and households

MISSOURI PESTICIDE COLLECTION EVENT

Saturday, May 18, 2019 ♦ 8 a.m. to noon

**University of Missouri – Southwest Research Center
14548 Highway H, Mount Vernon, MO 65712**



Southwest Research Center
University of Missouri

Accepting all pesticides including: herbicides, insecticides, fungicides, rodenticides, dewormers, fly tags and fertilizer containing pesticides.

Pesticides from businesses will not be accepted.

For more information, call 573-751-0616 or visit: dnr.mo.gov/env/hwp/pesticide

MU Extension Staff Headquartered in Greene County



Kelly McGowan

Horticulture Specialist
mcgowank@missouri.edu

Started: 2012

Job responsibilities: I coordinate the Core Training for the Greene County Master Gardeners, assist the Master Gardener chapter, and also develop and plan educational opportunities and events for the public.



David Burton

County Engagement in
Community Development
burtond@missouri.edu

Started: 2001

Job responsibilities: Community engagement through leadership development, social media, heritage tourism, and media relations efforts. Helps council to fund and administer office and to plan local programs.



Renette Wardlow

Human Development
wardlowr@missouri.edu

Started: Jan. 1987

Responsibilities: Programs related to parenting, youth development, character education, teen issues, anger and stress management, building positive self-esteem and child development.



Jeff Barber

Housing and Design
barberj@missouri.edu

Started: Sept. 2005

Responsibilities: Jeff Barber is working with leaders in area communities and students at Drury to develop projects and visioning documents that improve living and expand economic options.



Kelsa Ferguson

Nutrition Specialist

Started: 2019

Responsibilities: Nutrition and health education programs including classes on chronic disease management, food preservation and more.



Amy Patillo

Workforce Development
patilloa@missouri.edu

Started: November 2011

Responsibilities: Workforce development, leadership and community development programming for businesses, government agencies and nonprofits and leading local foods grants.



Justin Kastning

4-H Youth Associate

Started: January 7, 2019

Job responsibilities: Develop and expand current 4-H programming in the county and grow new clubs with a primary focus on 4-H programming at Greene County Youth Academy.



Maggie Black

Office Manager

Started: October 2015

Maggie manages office financials, soil tests, event registrations, council relations, and customer service of all types.

MU Extension Staff Serving Greene County



Sherri Hull
Nutrition Associate
Joined 2008



M. Dickensheet
Nutrition Associate
Joined 2018



Marty Wood
Nutrition Associate
Joined 2000



Mrya Stark
FNEP Program Manager



Della Miller
Nutrition Associate
Joined 2018



Terri Fossett
Program director
Joined 2000

Family Nutrition Education Program
2160 W. Chesterfield Blvd. F200, Springfield, Mo
Tel: 417-886-2059

Southwest Region Directors Office

1845 S. National, Ste. 100,
Springfield, Mo.
Tel: (417) 865-0707



Jay Chism, Regional Director, email: chismj@missouri.edu



Sarah Grubaugh, Assistant, email: GrubaughS@missouri.edu

Karla Deaver

4-H Youth specialist
Headquartered in Lawrence County
Tel: (417) 466-3102
Email: deaverk@missouri.edu



Andy McCorkill

Livestock specialist
Headquartered in Laclede County
Tel: (417) 532-7126
Email: mccorkilla@missouri.edu



Tim Schnakenberg

Agronomy specialist
Headquartered in Stone County
Tel: (417) 357-6812
Email: schnakenbergc@missouri.edu



Patrick Byers

Commercial Horticulture Specialist
Headquartered in Webster County
Tel: (417) 859-2044
Email: byerspl@missouri.edu



Reagan Bluel

Dairy Specialist
Headquartered in Barry County
Tel: (417) 847-3161
Email: BluelRJ@missouri.edu



Jim Spencer Jr.

Agriculture Business Specialist
Headquartered in Christian County
Tel: (417) 3581-3558
Email: spencerjr@missouri.edu



Sarah Havens

Natural Resources specialist
Headquartered in Laclede County
Tel: (573) 458-6260
Email: havenss@missouri.edu



Dr. Pam Duitsman

Community Development Specialist
Headquartered in Christian County
Tel: (417) 3581-3558
Email: duitsmanp@missouri.edu



Contact:

- Chrystal Irons
- Allen Waldo
- Lance Coffman
- Sandra Smart-Winegar



Irons



Smart



Coffman



Waldo

Located inside the Robert W. Plaster Free Enterprise Center
405 N. Jefferson Ave., Springfield, Mo | 417-837-2617-Phone | <https://sbtcd.missouristate.edu/>

Online at <http://extension.missouri.edu/greene>

Extension history in county:

Since 1914, Greene County and area residents have sought help from MU Extension in areas related to agriculture, gardening, 4-H youth, nutrition, families, business and community development. MU Extension programs focus on the high-priority needs of Missourians to improve lives, communities and economies with relevant, responsive and reliable educational solutions. Each county extension center, with oversight by elected and appointed citizens, is your local link to practical education.

Monthly Extension Meetings

4-H Leader's Council Meetings: 3rd Thursday of month (except July), 7 p.m. to 9 p.m., at Springfield Livestock Marketing Center.

Master Gardeners of Greene County—board meeting: First Monday of each month at 4:30 p.m. at the Botanical Center.

Master Naturalists Board Meetings: at 5:30 p.m. at the MDC regional office, on the second Wednesday of the month.

Greene County Extension Council: Last Monday of the month at noon at the Springfield Botanical Center. In May, meeting is on Tuesday.

Program Reports / Event Announcements

Up-to-date information about upcoming events and reports/photos on programs please like and follow the **Greene County Extension Council** Facebook page.

<https://www.facebook.com/GreeneCountyExtension>

This month see updates on:

- April Fool's Day Laughter
- Greene County Youth Academy
- Brown Bag University
- Leadership Book Discussions
- Video from the beef panel
- Gardening tips for Spring
- Recognition award updates



MU Greene County Extension Brown Bag University

From February 17, to March 16 (Statistics from Facebook) - 2,738 followers

Posts: Reach up 84% (2,240), Engagements 305, New page likes 31

Promotions: Reached 20,450 (down 23%), Engagements 2,493, New page likes 72



Greene County MU Extension

*Office located inside the Springfield-
Greene County Botanical Center*

2400 S. Scenic Ave., Springfield, Mo. 65807

Tel: (417) 881-8909

greeneco@missouri.edu

Office hours:


Monday - Friday * 8 a.m. to 4:00 p.m.

<http://extension.missouri.edu>



272

INTEROFFICE MEMORANDUM

TO: Greene County Commission
FROM: Rick Artman, Highway Administrator 
SUBJECT: March Monthly Report
DATE: 4/01/2019

OPERATIONS:

The maintenance crews have been involved in routine activities including the following:

DISTRICT 1 CREW

- Crews responded to winter weather events by treating the roads with deicing chemicals.
- Crews completed shoulder improvements at the following locations: FR 186, FR 115 and FR 84.
- Crews installed culvert drainage pipes on FR 186 and FR 9.
- Brush cutting and tree and stump removal operations were performed at the following locations: FR 9, FR 35, FR 43, FR 124, FR 125, FR 136, and FR 140.
- Crews milled headers in preparation of an asphalt overlay on FR 2.
- Crews repaired the damages to the ditch from a fallen tree on FR 168.
- Crews made sight distance improvements on FR 84 and FR 9.
- Crews filled cracks in the pavement at several subdivisions in the District.
- Crews repaired potholes at the following locations: FR 123, FR 131 and FR 101.
- Crews responded to heavy rain events by placing Type 1 barricades where water topped the roadways and removed gravel that had washed onto the roadway in various locations.
- Other tasks for the month included: trash and animal removal, street sweeping, inspections and maintenance of equipment, etc.

DISTRICT 2 CREW

- Crews responded to a snow event on March 3 by spreading deicing materials as needed.
- The Backhoe crew completed a drainage improvement project on FR 237. Work included ditch repair and drain pipe replacements.
- The Crew sealed cracks in the pavement at the following locations: FR 215, FR 223, FR 68, FR 62 and FR 227.
- Crews made sight distance improvements at Mumford and Fairhill St. by removing trees and stumps, grading the area, and placing seed and straw.
- On March 13, crews placed Type 1 barricades at locations where water was covering the road. Heavy rains and high winds caused problems at various locations.
- The Backhoe crew replaced a deteriorated drainage pipe on FR 28 and one on FR 209 north of FR 68. The crew also replaced a drainage pipe on FR 56 and removed leaves and debris from a pipe on FR 219.
- Crews cleaned debris from driveway drainage pipes at the following locations: FR 36 west of Rte H and FR 68 east of FR 197.
- Drainage improvements were completed on FR 221. The crew installed a new driveway drainage pipe and cleaned the ditch to correct the issue. Crews also cleaned ditches and drainage pipes on FR 44.
- The Backhoe crew removed accumulated debris from a drainage pipe outlet on Logan Avenue.
- Crews replaced a drainage pipe across the road on FR 68 east of Rte 65. The road cut area was then patched with hot mix asphalt.
- Our concrete contractor constructed a new sidewalk on the north side of Wheatridge Drive in the Woodland Hills subdivision. Several driveway approaches were also repaired.
- Other tasks for the month included: mowing, trash and animal removal, street sweeping, inspection, and maintenance of equipment, etc.

COUNTY-WIDE MAINTENANCE CREW

- **Shoulder widening**
 - District I
 - FR 9 N of Rte 160 to FR 60 = 1.0 mile
 - FR 25 S of Rte T to Rte F = .09 miles
 - FR 102 E of Rte F to FR 11 = 0.84 miles
- Pipe Installation
 - FR 9
- Miscellaneous
 - Crews performed regular "Toolbox Talks".
 - Crews cleaned equipment.

SPECIAL PROJECTS CREW - BOX CULVERTS/BRIDGE MAINTENANCE

- Crews removed the driveway on FR 156 where a resident was illegally parking vehicles and storing materials. Tasks included removing the asphalt drive and culvert drainage pipe, and re-establishing the ditch.
- Crews replaced box culvert #039018710 and box culvert #039018707.
- Crews used the Asphalt Zipper on FR 76 from Rte UU to the new bridge approach to produce millings, regrade, and compact.
- Crews have begun widening FR 39 starting at FR 64 and heading north.

Bridge Maintenance

- Completed box culvert inspections.
- Placed I.D. placards on box culverts that did not have permanent identification labels.

SHOP & WAREHOUSE

- The parts department has acquired and distributed the following parts and materials to the service center and maintenance personnel.
 - Physical Plant:
 - Total parts used = 168
 - Number of repair orders = 5
 - Total parts cost = \$7,066.59
 - Average cost per repair order = \$1,413.32

- Highway Department:
 - Total parts used = 1,038
 - Number of repair orders = 116
 - Total parts cost = \$30,794.85
 - Average cost per repair order = \$265.47
- Service Center:
 - Total parts used = 523
 - Number of repair orders = 96
 - Total parts cost = \$16,640.03
 - Average cost per repair order = \$173.33
- Warehouse:
 - Total purchase orders = 216
 - Total parts returned = 17
 - Total dollar amount received = \$50,911.13

TRAFFIC CONTROL

- Set out traffic counters and collected speed and volume data at various locations.
- Crews performed routine sign maintenance. Crews also responded to high wind events by making necessary repairs to damaged existing signs.
- Crew is completing routine/preventative maintenance repairs to the striping in preparation of the upcoming striping season.
- Set up detours for work zones and placed portable speed display boards at various locations.

SAFETY

- Vehicle Accidents
 - Sheriff = 3
 - Highway = 3
 - General Services = 0
 - Reportable Injuries = 3
 - Near Hits = 0
- Random drug testing was performed per DOT requirements.
- Work zone audits were conducted at various locations.
- All crews performed "Toolbox Talks".

ENGINEERING AND INSPECTION

Farm Road 170 (Republic Road) Roadway & Drainage Improvements (State Hwy FF to Golden Ave.) (*Hartman & Company, Inc.*). Project is substantially complete. The contractor continues to maintain Erosion Control Systems. Contractor is submitting Final Lien Waivers per contract requirements.

Farm Road 76 Bridge Project over Clear Creek (*Boone Construction, Columbia, MO*)
Project is approximately 95% complete. The bridge structure and bridge approaches have been constructed. The roadway embankment has been final graded, compaction tested and ready for the aggregate base rock to be placed. Asphalt plant is back online and paving should be done this week.

ASPHALT/HOT MIX/MICRO SEAL

Completed road ratings and overlay list for District I and District II for 2019. Asphalt plants are re-opening and our paving contractor will be starting the overlay work soon.



MARCH END-OF-MONTH REPORT

YEAR-TO-DATE STATISTICS

RISK ASSESSMENT

Hazard Reports: 21 (+15)

Watch Officer Summaries: 7 (+4)

Vulnerability Assessments: +1

VOLUNTEERS

CERT/CART Hrs.: 48 (+11)

Reservist Program Hrs.: 15 (+12)

Intern Program Hrs.: 173 (+108)

Vol. Program Hrs.: 101 (+46)

EDUCATION

CERT Graduates:

CERT New Members: 2

PUBLIC AFFAIRS

Press Releases: 1

News Stories: 8

OEM Facebook followers: 12,213 (+309)

OEM Twitter followers: 4,017 (+19)

CERT Facebook followers: 854

Community Outreach:

PSC Monthly Usage: 1,178 people

PSC Tours: 313 people total

PROCEDURES-GUIDELINES

SOP Development/Update: 0

RECYCLING TOTALS

(243WKS)

Metal: 2,479 lbs.

Paper: 23,534 lbs.

Plastic: 4,233 lbs.

E-Waste: 11,967 lbs.

Glass: 825 lbs.

Cardboard: 6,092 lbs.

Overall Total: 49,131lbs.

Administration:

- Conducted interview with KY3
- Participated in statewide Healthcare Coalition tabletop drill
- Participated in Campus Security meeting
- Met with new NewsLeader reporter
- Met with COAD executive committee
- Developed draft Information Management document for EOC operations
- Prepared for the facilitation of the annual EOC Workshop
- Participated in Route 66 event planning meeting
- Attended coordination meeting with community representatives regarding special event in 2020
- Presented EMPG to Commission for approval
- Participated in meeting for Great Game of Government rollout
- Attended Springfield Fire Department Awards and Promotions ceremony
- Met with UMC student to provide EOC development guidance
- Met with Commissioner Russell and citizen regarding siren questions for Fellows Lake area
- Met with members of the LDS Church to discuss Volunteer Coordination Center activities

Public Affairs:

- Conducted 10 tours in the month of March, for a total of 313 people
- Developed a social media campaign to highlight and promote the benefits of severe weather awareness and preparedness
- Met with marketing and communications personnel from City Utilities to develop video outline for a Facebook live event during Severe Weather Awareness Week
- Attended Battlefield Mall Severe Weather Awareness Expo on March 2 to promote severe weather awareness and educate the public about the benefit of being prepared for severe weather
- Attended Springfield Leadership team meeting
- Drafted press release to media regarding the cancellation of the outdoor warning sirens due to cold weather conditions
- Participated in Facebook live event with City Utilities discussing the importance of severe thunderstorm awareness and highlighting lightning safety
- Attended PIO training for Health Care Providers
- Attended SEMA course on Social Media Engagement Strategies
- Posted monthly siren test cancellation on social media channels; responded to public response and educated the public on the details of testing the outdoor warning sirens each month
- Coordinated video production efforts with county departments for two major events hosted in the EOC; Greene County Budget Transparency announcement and the 2019 Huddle Awards
- Participated in required WebEOC training
- Attended Greene County L.E.A.D. committee meeting



MARCH END-OF-MONTH REPORT

- Continued to strategize and develop a robust social media schedule and calendar to regulate OEM social media postings
- Created workbook materials and led position-specific discussion for the 2019 EOC Workshop

Operations:

- Attended 2019 Seasonal Integrated Weather Team (IWT) Workshop
- Attended Bass Pro Fitness Series Meeting
- Attended and participated in Crisis Event Response and Recovery Access (CERRA) Webinar
- Participated in HAZUS Webinar; focus on New York City Office of Emergency Management
- Attended Pipeline Training/Exercise in El Dorado Springs
- Attended Light The Way Meeting with Senior Planner
- Participated in the 2019 Route 66 Planning Meeting (Operations and Logistics)
- Attended LEPC Executive Committee Meeting
- Presented Logistics Section during participation in the Emergency Operations Center Workshop
- Assisted Training and Exercise Specialist in Planning the Emergency Operations Center Workshop
- Attended K-LOVE Training; Managing Relationships during Crisis and Operational Stress First Aid
- Planned and proposed office staff involvement in the September 2019 Communications Exercise
- Participated in the coordination of the Springfield Tornado Drill
- Worked with Director to plan staff attendance to MOEMA, including the proposal to invite a commissioner
- Assisted Senior Planner and Mitigation Planner with Mitigation capabilities questionnaire research
- Researched and created workplace culture study proposal to Director

Planning:

- Represented OEM at quarterly Integrated Warning Team meeting led by NWS
- Represented OEM at the Battlefield Mall Severe Weather Expo
- Assisted with IRIS contact updates for EOP
- Attended Bass Pro Marathon planning meeting
- Began coordination and planning for Bass Pro Marathon in November
- Participated in FEMA's HAZUS hazard mitigation webinar
- Participated in CERRA (Crisis Event Response and Recovery Access) webinar
- Attended Pipeline Association Meeting (PAM) in El Dorado Springs
- Met with Logan-Rogersville Fire Chief to discuss upcoming special event, Light the Way, in July
- Facilitated Route 66 Festival planning meeting



MARCH END-OF-MONTH REPORT

- Updated Planning Section Workshop and served as Planning Section Chief during EOC Workshop
- Represented Greene County municipalities at 9-1-1 monthly Advisory Board meeting
- Provided planning update at LEPC Executive meeting
- Attended two crisis response trainings in Ozark, MO: Operational Stress First Aid and Managing Relationships During Crisis
- Assisted Mitigation Contractor with Mitigation Plan activities, including kick-off meetings invitations, agenda, and mitigation workbook
- Continued revisions to 2019 EOP update
- Continued overhaul of EOP for 2020 rewrite

Municipal Planner:

- Coordinated with Willard to finish tabletop exercise scenario
- Coordinated municipality and public school involvement for mitigation planning
- Negotiated with Springfield Public Schools to renew pre-disaster planning IGA
- Participated in Annual EOC workshop
- Performed safety audits for community schools
- Assisted Walnut Grove with the development of their mitigation objectives
- Updated Ash Grove's Master Activation List
- Began updating Springfield Public School's Master Activation List
- Continued updates to 2019 Municipal and SPS EOPs
- Oversaw intern projects related to disaster messaging, minority accommodation
- Researched cybersecurity material for future inclusion in EOP

Training/Exercises:

- Created and implemented weekly electronic Training & Exercise newsletter format, receiving positive feedback from community partners
- Participated in coordination of Statewide Tornado Drill
- Conducted in coordination of city wide Tornado Drill
- Implemented weekly CERT administrative meeting, improving progress on processing applications
- Conducted CERT leadership meeting and coordinated CERT monthly meeting
- Attended MOCERT1 meeting, discussed plans for 2020 CERT Conference
- Obtained and transported 40 animal cages to PSC and added to CART inventory
- Began Spring CERT Basic Training: 43 participants registered
- Opened registration for Fall CERT Basic Training
- Coordinated two WebEOC trainings
- Reported on training opportunities at LEPC Executive Committee meeting

Information Technology:

- Completed the PSC computer refresh
- Updated the firmware on all Crestron touchpads
- Set up laptop for the new Mitigation Contractor

24

GREENE COUNTY PLANNING & ZONING
COMMISSION REPORT BETWEEN 03/01/2019 AND 03/31/2019

FEE CATEGORY	MONTH	YEAR TO DATE
ADMIN. SUBDIVISION	\$ 2,900.00	\$ 7,000.00
ADMIN. VARIANCE	\$ -	\$ 300.00
ADVERTISING	\$ 400.00	\$ 900.00
ANNUAL INSPECTION	\$ 400.00	\$ 600.00
BOARD OF ADJUSTMENT	\$ 2,750.00	\$ 5,550.00
BOOKS	\$ -	\$ 5.00
COPIES	\$ -	\$ -
COUNTY ROAD MAP	\$ -	\$ -
COVENANTS	\$ 36.00	\$ 36.00
FINAL PLAT	\$ -	\$ 1,740.00
FINAL PLAT INSPECTION FEE	\$ -	\$ -
FLOODPLAIN PERMIT	\$ -	\$ -
GIS	\$ -	\$ -
GRADE PERMIT	\$ 400.00	\$ 1,900.00
HIGHWAY FEES	\$ -	\$ -
HOME OCCUPATION	\$ 300.00	\$ 600.00
PLAT EXTENTION	\$ -	\$ 2,000.00
POSTAGE	\$ 193.50	\$ 683.50
PRELIMINARY PLAT	\$ 500.00	\$ 1,020.00
RECORDING FEES	\$ 633.00	\$ 1,613.00
REPLAT	\$ 520.00	\$ 2,120.00
REZONING	\$ 2,850.00	\$ 7,600.00
SEMINARS	\$ 360.00	\$ 360.00
SIDEWALK DIST. 1	\$ -	\$ -
SIDEWALK DIST. 2	\$ -	\$ -
SIDEWALK DIST. 2	\$ -	\$ -
SIDEWALK DIST. 4	\$ -	\$ -
SKETCH PLAT	\$ 980.00	\$ 980.00
STREET SIGNS	\$ -	\$ -
SUBDIV. VARIANCE	\$ -	\$ -
VACATION	\$ -	\$ -
ZONING ROAD MAP	\$ -	\$ -
TOTALS	\$ 13,222.50	\$ 35,007.50
BUILDING CHECKLISTS & ZONING REVIEWS	\$ 2,055.00	\$ 4,585.00

Collected by Building Regulations Dept

			MONTH	Y-T-D
Subdivision Approvals:	Final Plats		4	7
	Number of Lots		6	38
	Preliminary Plats		1	4
	Number of Lots		14	262
	Administrative Subdivisions		3	6
	Number of Lots		7	14
<u>Zoning Cases:</u>	<u>Approved</u>	<u>Denied</u>	<u>Tabled</u>	<u>Y-T-D</u>
Board of Zoning Adjustment	3	1	0	10
County Commission	2	0	0	6

Fees Collected for Highway Dept. as of March 31, 2019	\$ -
Fees Collected for Street Signs & Sidewalks as of March 31, 2019	\$ -
Fees Collected for General Revenue as of March 31, 2019	\$ 39,592.50

