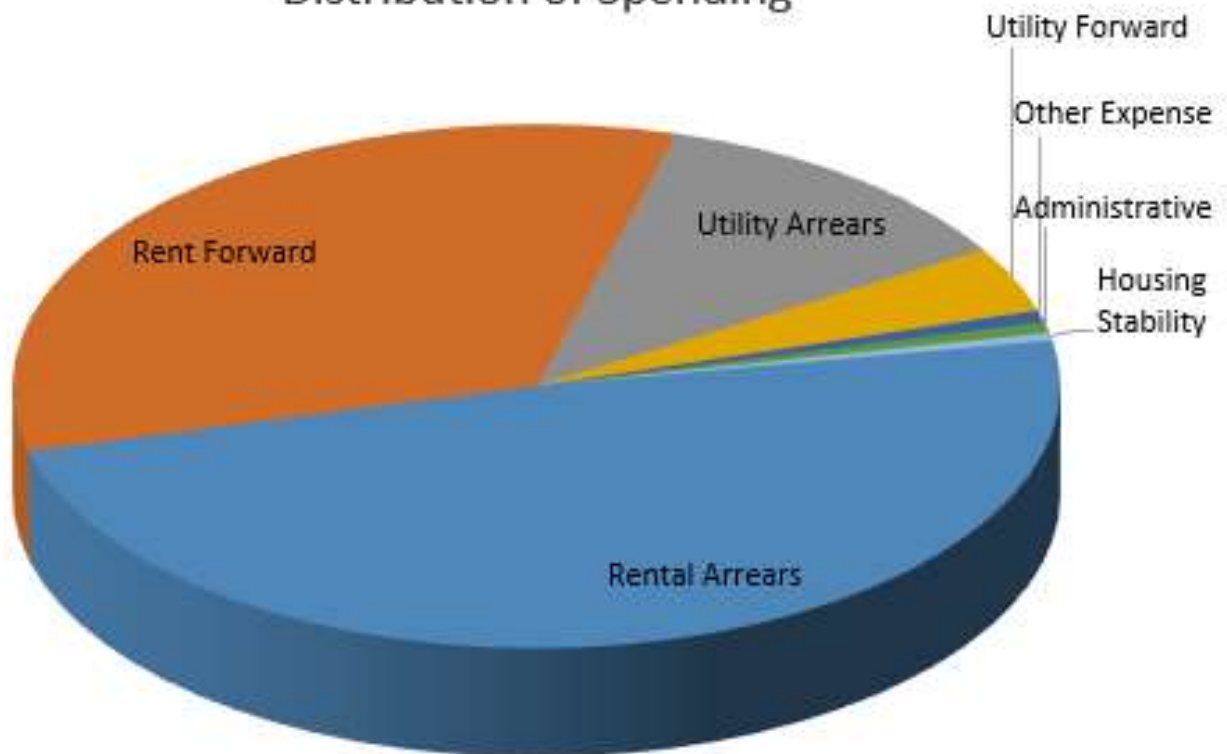


ERA Status Update as of June 7, 2021

Awards to date amount to 25.59% of total funds. Agency partners report having capacity to serve more clients and we are taking steps to improve awareness of the availability of funds.

Type	# Months	Awards	
Rental Arrears	989	865,118.59	48.74%
Rent Forward	1,109	591,804.46	33.34%
Utility Arrears	800	212,780.84	11.99%
Utility Forward	457	71,928.32	4.05%
Other Expense	64	12,848.00	0.72%
Administrative		11,859.65	0.67%
Housing Stability	51	8,613.43	0.49%
Grand Total	3,470	1,774,953.29	

Distribution of Spending



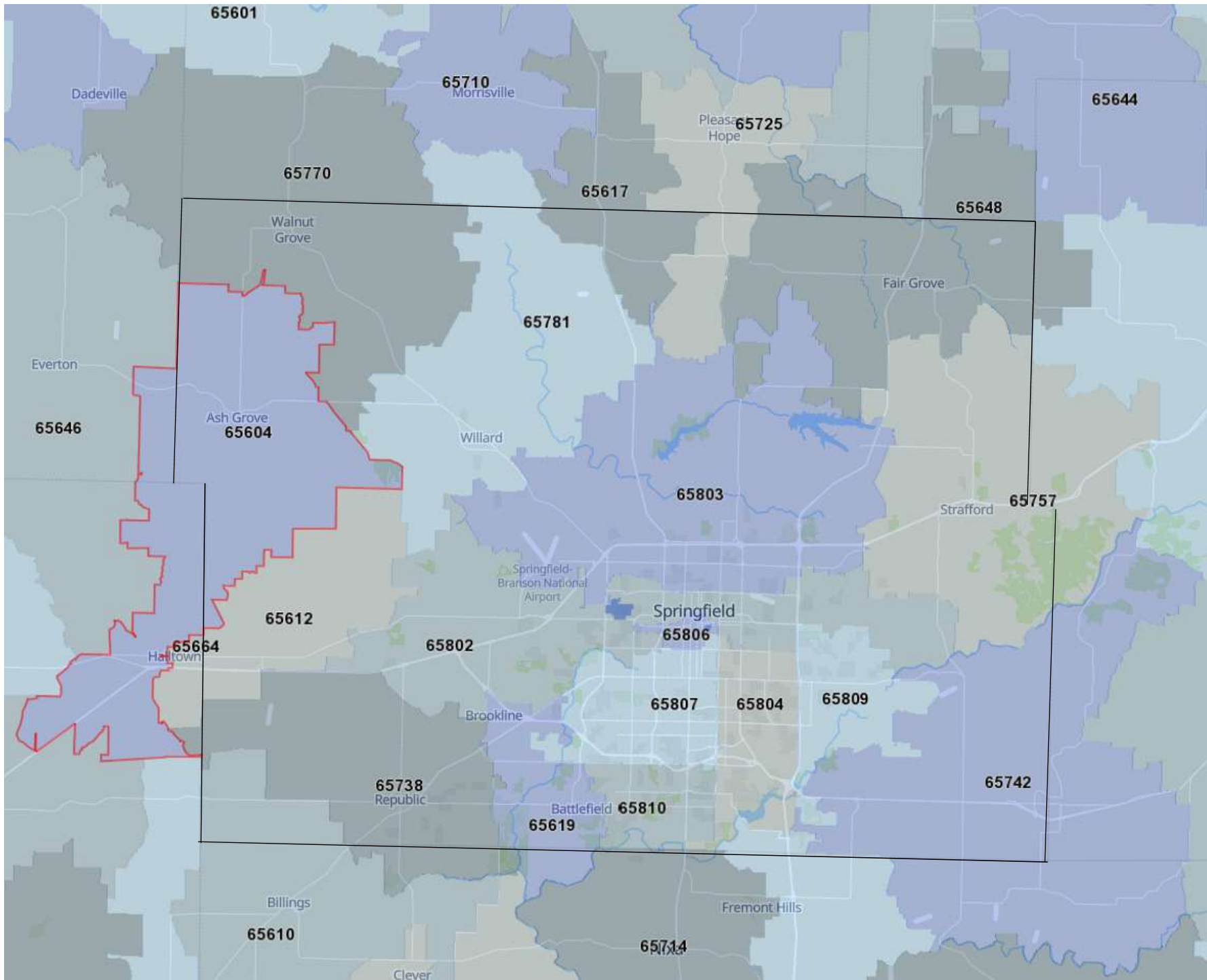
ERA activity reported as through June 7, 2021

Ethnicity	# Units	# Impacted	Awards	
Client refused	7	25	31,376.13	1.78%
Hispanic/Latino	20	53	57,099.99	3.24%
Non-Hispanic/Non-Latino	582	1,407	1,674,617.52	94.98%
Grand Total	609	1,485	1,763,093.64	

Race	# Units	# Impacted	Awards	
American Indian/Alaska Native	5	10	29,505.00	1.67%
Asian	4	9	10,636.64	0.60%
Black/African American	170	402	436,848.38	24.78%
Client doesn't know	2	4	3,890.60	0.22%
Client refused	3	4	8,641.18	0.49%
Native Haaiian/Pacific Islander	3	11	8,219.68	0.47%
White/Caucasian	422	1,045	1,265,352.16	71.77%
Grand Total	609	1,485	1,763,093.64	

Gender	# Units	# Impacted	Awards	
Female	445	1,149	1,264,059.43	71.70%
Male	164	336	499,034.21	28.30%
Grand Total	609	1,485	1,763,093.64	

Income Group	# Units	# Impacted	Awards	
30%	365	874	999,275.65	56.68%
50%	164	409	513,600.63	29.13%
80%	80	202	250,217.36	14.19%
Grand Total	609	1,485	1,763,093.64	



6/7/2021

missouri-demographics.com					Social Explorer - ACS 2019 (5-Year Estimates)									Calc	ERA1	ERA1	ERA1			
Zip	Pop	Median Income	Poverty Percent	Median Age	White Alone	Black or African n Alone	American Indian and Alaska Native Alone	Asian Alone	Native Hawaiian and Other Pacific Islander	Some Other Race Alone	Two or More Races	Hispanic or Latino:	Pop x	People		Award	Poverty	Zip Name		
													Poverty	Awards	Affected	Amount	Penetration			
65802	47,378	39,044	13.7%	31.8	88.9%	3.7%	1.2%	0.9%	0.0%	1.7%	3.7%	5.6%	6,491	133	321	366,324.41	4.95%	Springfield -		
65803	41,316	37,255	15.3%	37.3	89.0%	4.8%	0.5%	0.8%	0.1%	1.0%	3.9%	3.8%	6,321	165	406	438,246.15	6.42%	Springfield -		
65807	58,103	42,321	9.8%	31.1	86.1%	4.9%	0.5%	2.6%	0.2%	1.2%	4.5%	4.5%	5,694	120	312	388,116.99	5.48%	Springfield -		
65806	12,438	19,457	28.1%	25.9	83.5%	8.4%	0.8%	4.7%	0.1%	0.3%	2.3%	6.6%	3,495	53	108	126,550.45	3.09%	Springfield -		
65804	37,461	49,351	8.9%	39.9	93.4%	1.5%	0.4%	2.8%	0.0%	0.7%	1.4%	2.4%	3,334	70	151	206,408.78	4.53%	Springfield -		
65721	31,876	60,685	8.2%	36.4	95.7%	1.0%	0.4%	0.3%	0.1%	0.2%	2.5%	1.7%	2,614	1	4	5,285.94	0.15%	Ozark -Majority of Zip in Christian County		
65738	19,253	56,108	7.3%	34.1	92.5%	1.8%	0.1%	2.2%	0.0%	0.7%	2.7%	2.2%	1,405	16	49	51,331.02	3.49%	Republic - Statement stuffers distributed		
65810	22,652	71,557	3.9%	44.3	88.1%	3.2%	0.2%	4.7%	0.1%	2.0%	1.8%	3.1%	883	13	32	69,689.07	3.62%	Springfield-		
65742	13,264	62,197	3.6%	40.5	95.8%	0.1%	0.6%	0.5%	0.0%	0.5%	2.5%	1.9%	478	5	8	15,258.72	1.68%	Rogersville -		
65781	8,745	68,153	4.6%	38.3	95.1%	0.9%	0.6%	0.0%	0.0%	1.9%	1.7%	2.7%	402	14	41	37,653.21	10.19%	Willard - printing on back of statement stuffers		
65809	11,890	100,378	3.3%	46.0	95.7%	0.4%	0.3%	1.4%	0.0%	0.1%	2.2%	1.8%	392	0	0	0.00	0.00%	Springfield -		
65770	3,345	58,385	11.7%	37.6	99.2%	0.0%	0.1%	0.4%	0.0%	0.0%	0.4%	1.0%	391	2	7	7,455.18	1.79%	Walnut Grove		
65757	7,022	64,116	5.0%	44.6	94.0%	0.6%	0.1%	2.3%	0.0%	0.0%	3.1%	0.5%	351	3	8	13,796.98	2.28%	Strafford		
65648	6,419	58,717	5.1%	39.7	97.7%	0.2%	1.2%	0.1%	0.0%	0.1%	0.6%	2.0%	327	1	2	3,462.79	0.61%	Fair Grove - In progress		
65604	3,366	53,212	8.6%	47.7	96.3%	0.4%	0.2%	1.0%	0.0%	0.7%	1.5%	1.8%	289	2	2	5,807.65	0.69%	Ash Grove - Posters and flyer up at locations		
65610	4,901	59,538	5.80%	45.4	98.8%	0.1%	0.3%	0.0%	0.0%	0.2%	0.6%	3.2%	284	0	0	0.00	0.00%	Billings - Majority of Zip in Christian County		
65619	7,400	61,296	3.8%	38.8	88.9%	1.3%	0.0%	2.7%	0.0%	3.9%	3.1%	5.6%	281	11	34	27,706.30	12.09%	Brookline - Statement stuffers distributed		
65725	3,056	52,094	7.6%	39.2	94.2%	0.3%	2.0%	0.0%	0.0%	0.0%	3.5%	0.6%	232	0	0	0.00	0.00%	Pleasant Hope		
65617	1,308	54,286	11.0%	43.3	100.0%	0.0%	0.0%	0.0%	0.0%	0.0%	0.0%	0.0%	144	0	0	0.00	0.00%	Brighton - Majority in Polk County		
65612	1,052	60,368	0.0%	53.1	94.6%	0.0%	5.4%	0.0%	0.0%	0.0%	0.0%	0.0%	0	0	0	0.00	NA	Bois D'Arc - Stuffers giving to water district		
Overall Greene	275,179	46,086	14.4%		89.8%	3.3%	0.5%	2.0%	0.0%	1.1%	3.1%	3.7%	39,626	609	1,485	1,763,093.64	3.75%			

19.6% In other Counties -31,022