



FOR IMMEDIATE RELEASE

Dec. 21, 2021

Construction to begin on Kansas Expressway Extension

SPRINGFIELD, Mo. – The Greene County Commission has signed a contract allowing construction crews to begin extending Kansas Expressway at Republic Road in south Springfield.

The contractor, Emery Sapp & Sons, can start mobilizing equipment on Wednesday, December 22. MoDOT approved their lowest bid of \$15.7 million for Phase 1 construction, almost \$6 million under the engineer's cost estimate of \$21.6 million.

Construction will be divided into two phases. Phase 1 is from Republic Road to Plainview Road. Phase 2 is from Plainview Road to Farm Road 190. All construction on Phase 1 must be completed by November 1, 2023. Phase 2 construction is anticipated to start in the winter of 2023, with completion in the spring of 2025.

Crews will build a new two-lane road with turning lanes at major intersections, new stormwater improvements, and a pedestrian and bicycle path along the corridor. The extension will also be cleared for future expansion.

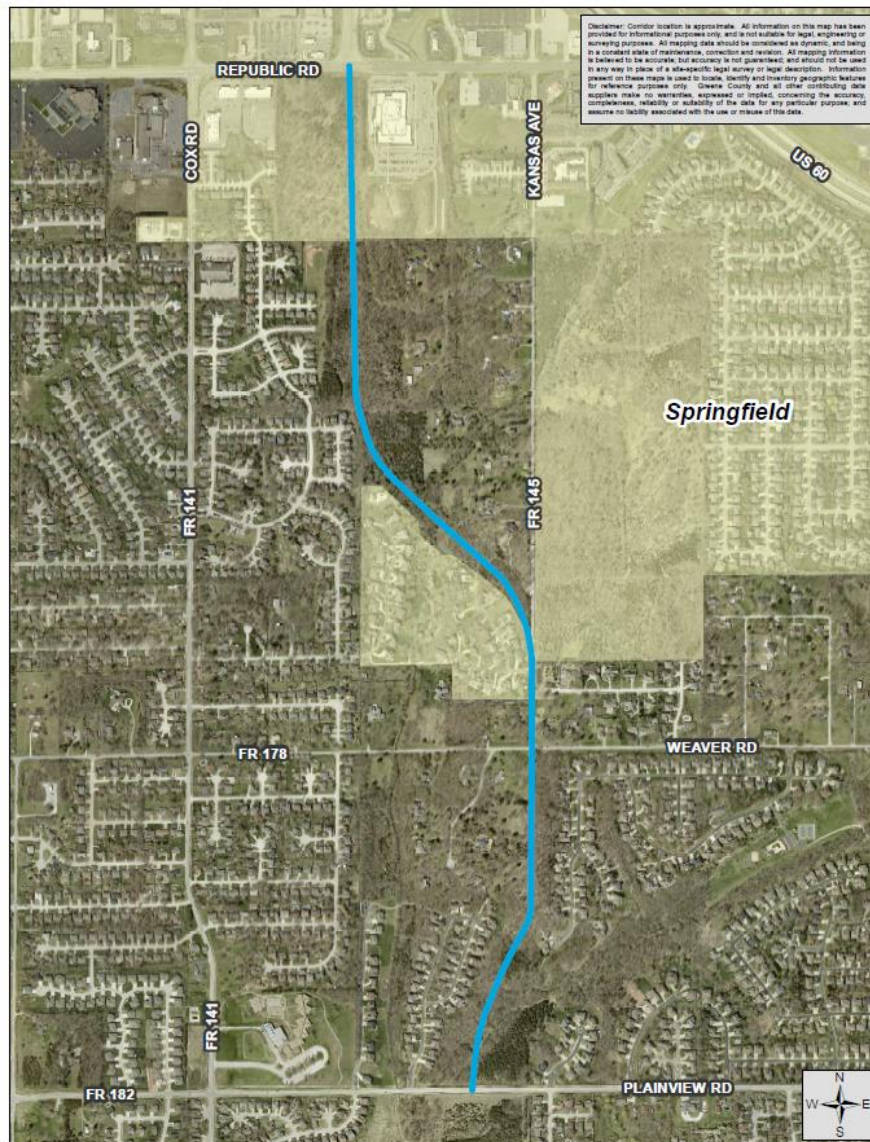
The new roadway will provide motorists with an alternative connection in southern Greene County and provide traffic congestion relief along parallel routes at Cox Road and Campbell Avenue.

80% of the project will be paid with federal transportation funds and 20% will be paid by Greene County. The City of Springfield is also a cost share partner as the northern portion of the extension falls within the city limits of Springfield.

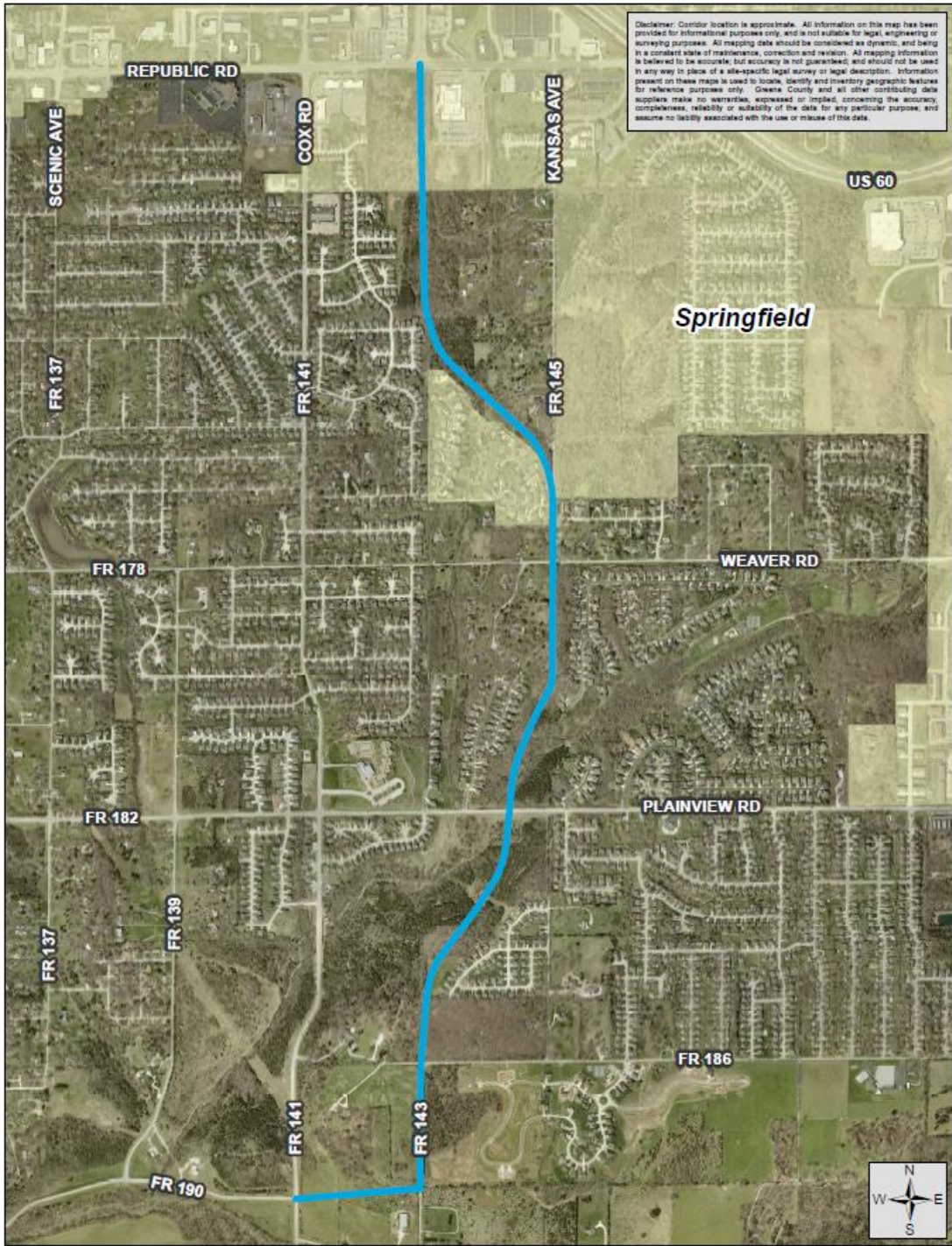
Planning for the Kansas Expressway Extension began nearly four decades ago. In the early 1980's both Greene County and the City of Springfield recommended a major thoroughfare plan south of Route M.

After several feasibility studies in the following years, the project was approved, and planning preparations began. Fast forward to today, environmental assessments and right of way plans have been finalized, clearing the route for construction in 2022.

For more information on the extension plus project materials, please visit:
https://www.greencountymo.gov/highway/future_projects.php.



Kansas Expressway Extension Phase 1 construction route



Full Kansas Expressway Extension route: both Phase 1 & 2



1980 aerial photo for the Kansas Expressway Extension study

###

Greene County is the State of Missouri's fourth most populous county, serving approximately 295,000 people. Its mission is to provide all citizens of Greene County, including those in its cities, a safe and thriving community through excellent customer service, unparalleled dedication, and the efficient use of taxpayer dollars. The Greene County Commission is the executive body of Greene County operating under guidelines established in the Revised Statutes of the State of Missouri. Within that authority the Commission enacts ordinances, resolutions and policies, supervises the activities of county departments, fixes salaries, adopts the annual budget, provides for construction and other services, and conducts hearings on planning and zoning matters.

For additional information, contact Robert Jehle, Public Information Officer, at 417-844-4311 or rjehle@greencountymo.gov.