

GREENE COUNTY JUVENILE

2008
CHILD ABUSE & NEGLECT
STATISTICS

Abuse/Neglect Numbers

- On average, there were 800 children in care involving an average of 500 families.
- **Referrals**

	<u>total</u>	<u>average</u>
● Family	341	28/month
● Children	567	47/month
- **Filings**

	<u>total</u>	<u>average</u>
● Family	223	18/month
● Children	367	30/month
- Petitions were filed on 65% of the referrals received.

Abuse/Neglect Referral Allegations

● Allegation Types

● Chronic Neglect	247	38%
● Drugs/Alcohol	235	36%
● Physical Abuse	61	9%
● Protective Custody	61	9%
● Sexual Abuse	35	5%
● Medical Neglect	11	2%
● Educational Neglect	4	1%
● Emotional Abuse	0	0%
● Abandonment	3	0%

Drug & Alcohol Referrals

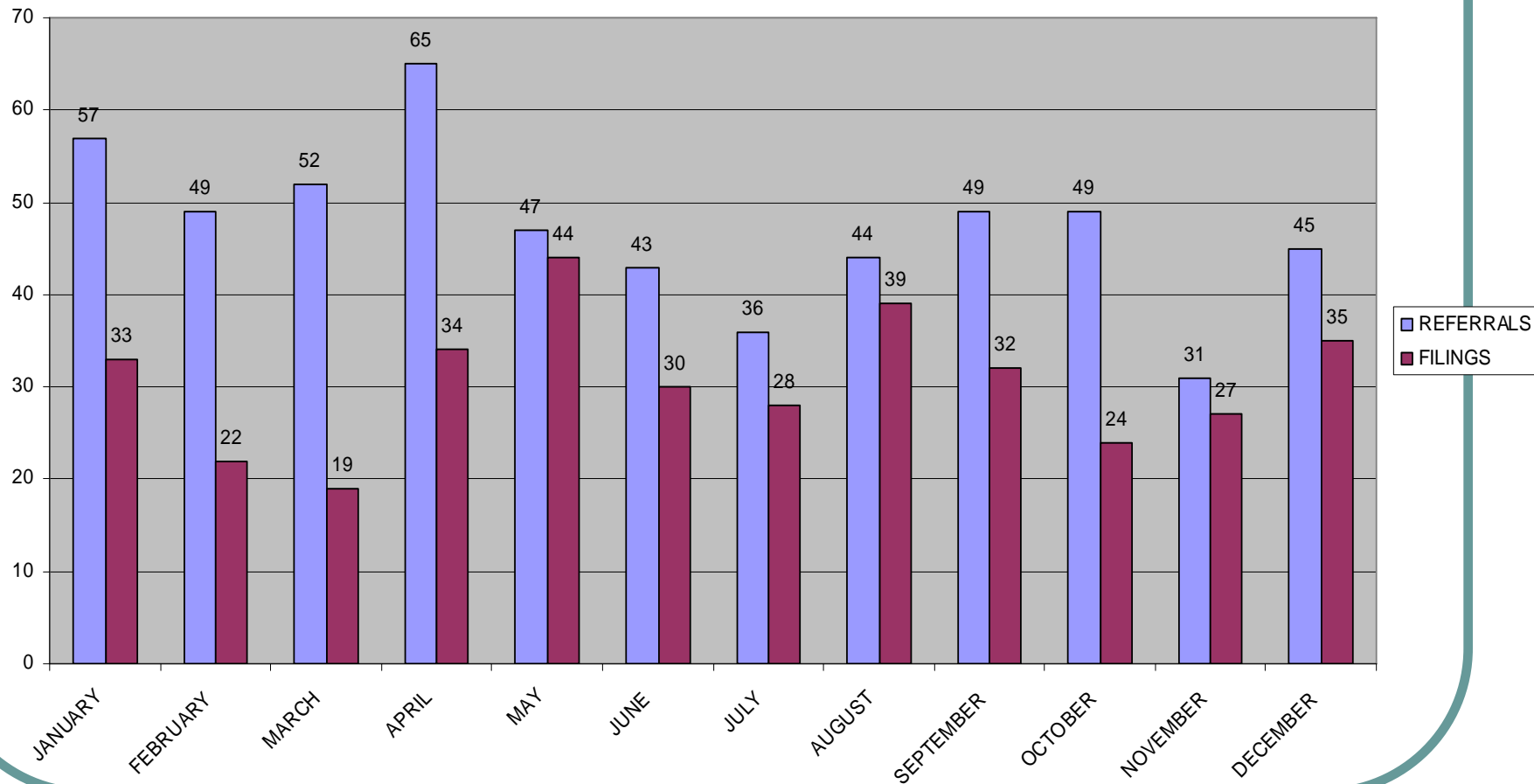
- **Drugs & Alcohol involved cases**
- **Family**
 - Referrals 139
 - Filings 98
- **Children**
 - Referrals 235
 - Filings 170
- **Petitions were filed on 72% of these referrals received.**

Abuse/Neglect Case Closings

- **There were 324 children's cases closed.**
 - **Reunification** 146 45%
 - **Adoption** 106 33%
 - **Independence** 37 11%
 - **Guardianship** 19 6%
 - **Run Away** 9 3%
 - **Transfer Jurisdiction** 6 2%
 - **Deceased** 1 0%

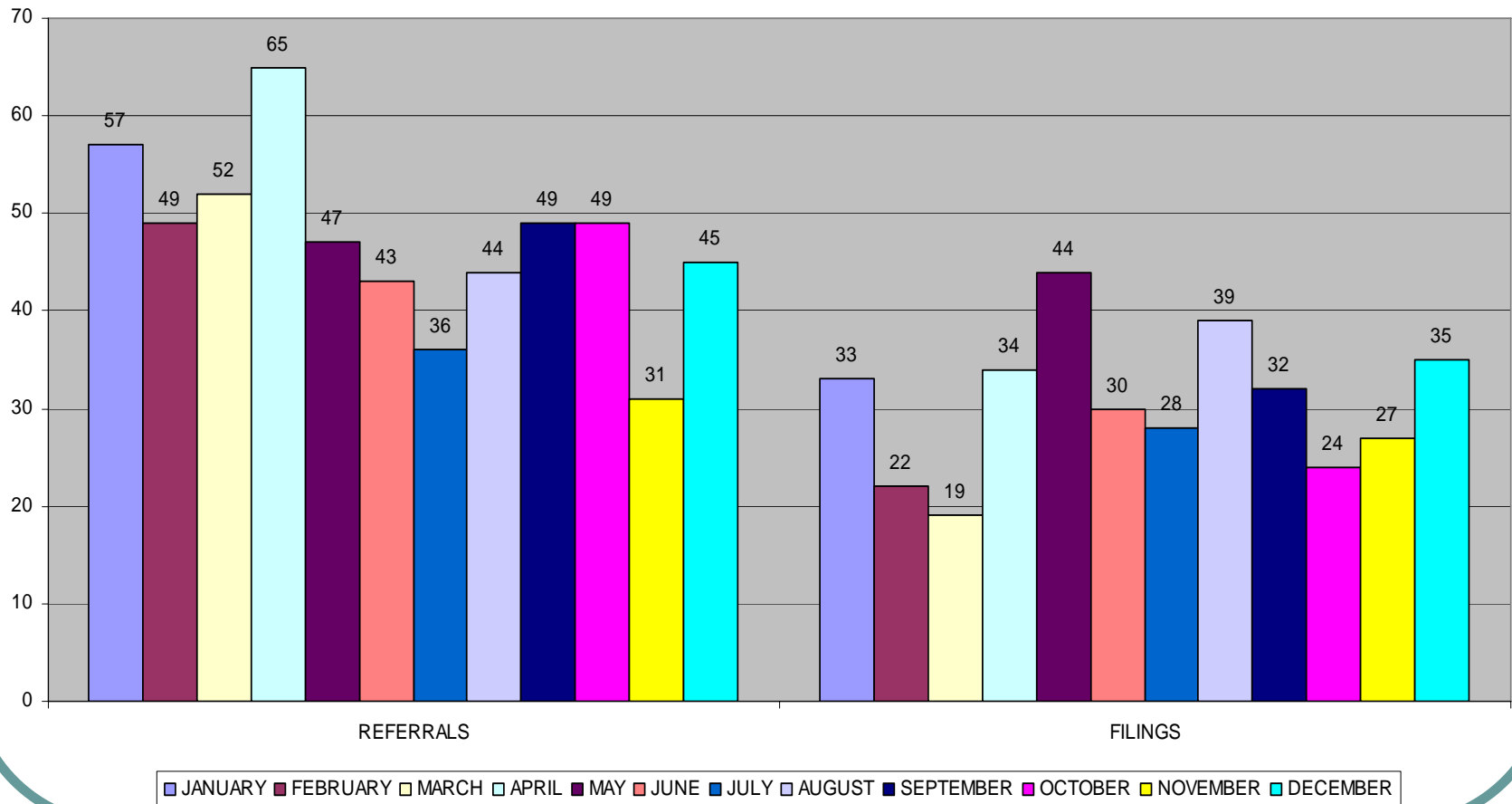
Referrals & Filings

REFERRALS & FILINGS FOR 2008



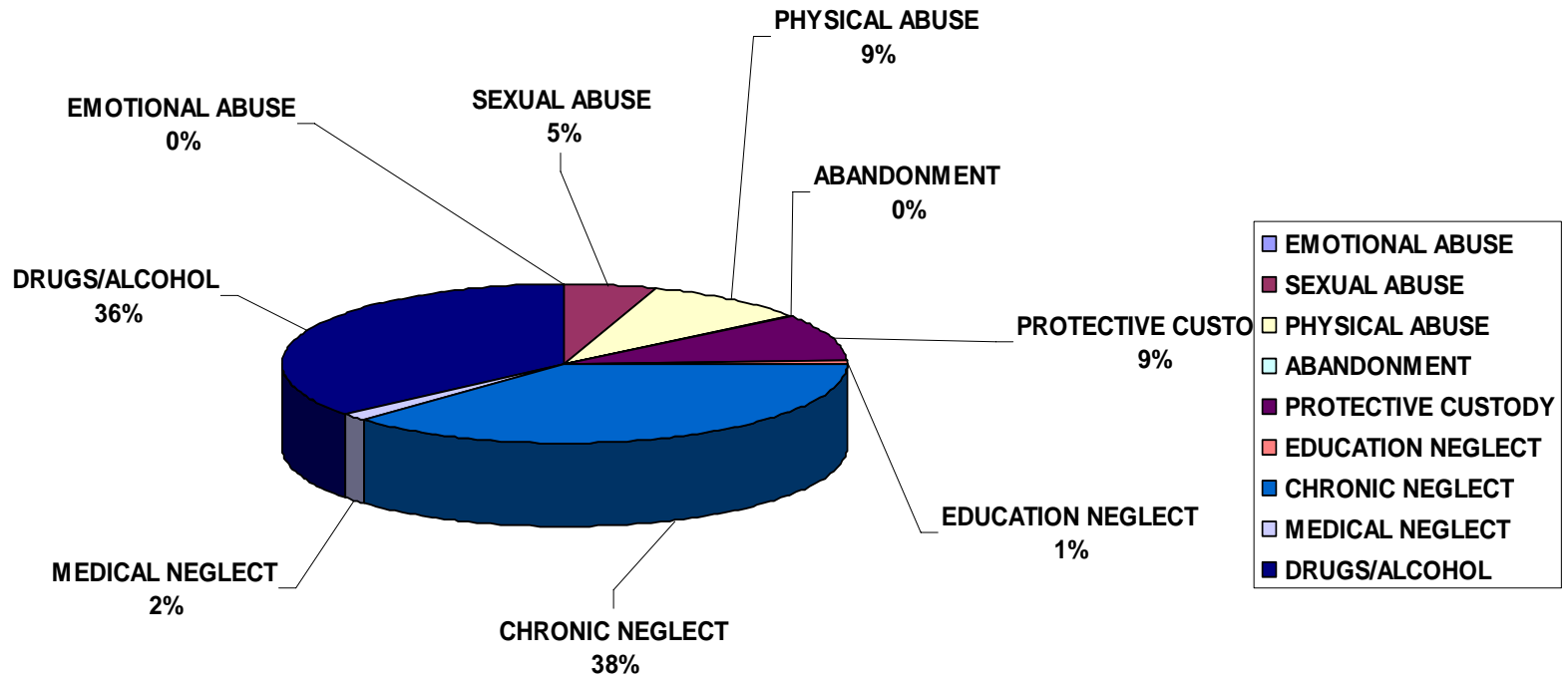
Referrals & Filings

REFERRALS & FILINGS FOR 2008



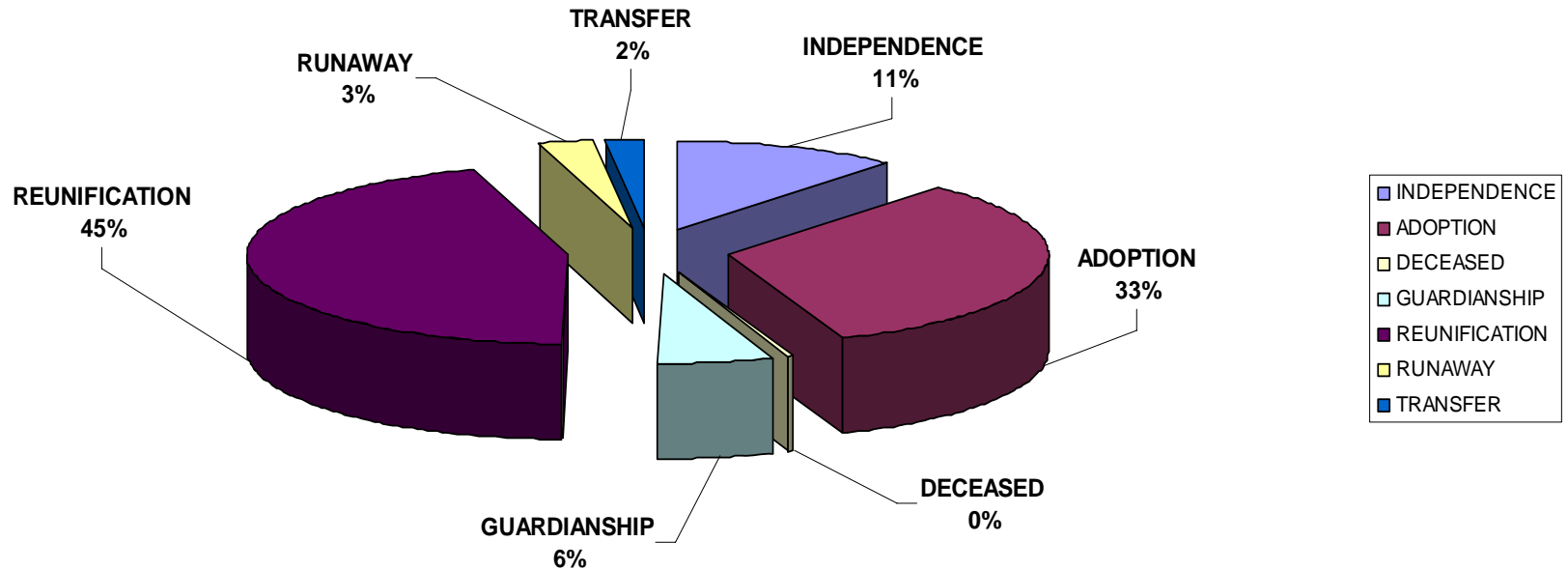
Referral Allegations

Abuse & Neglect Referral Allegations
2008



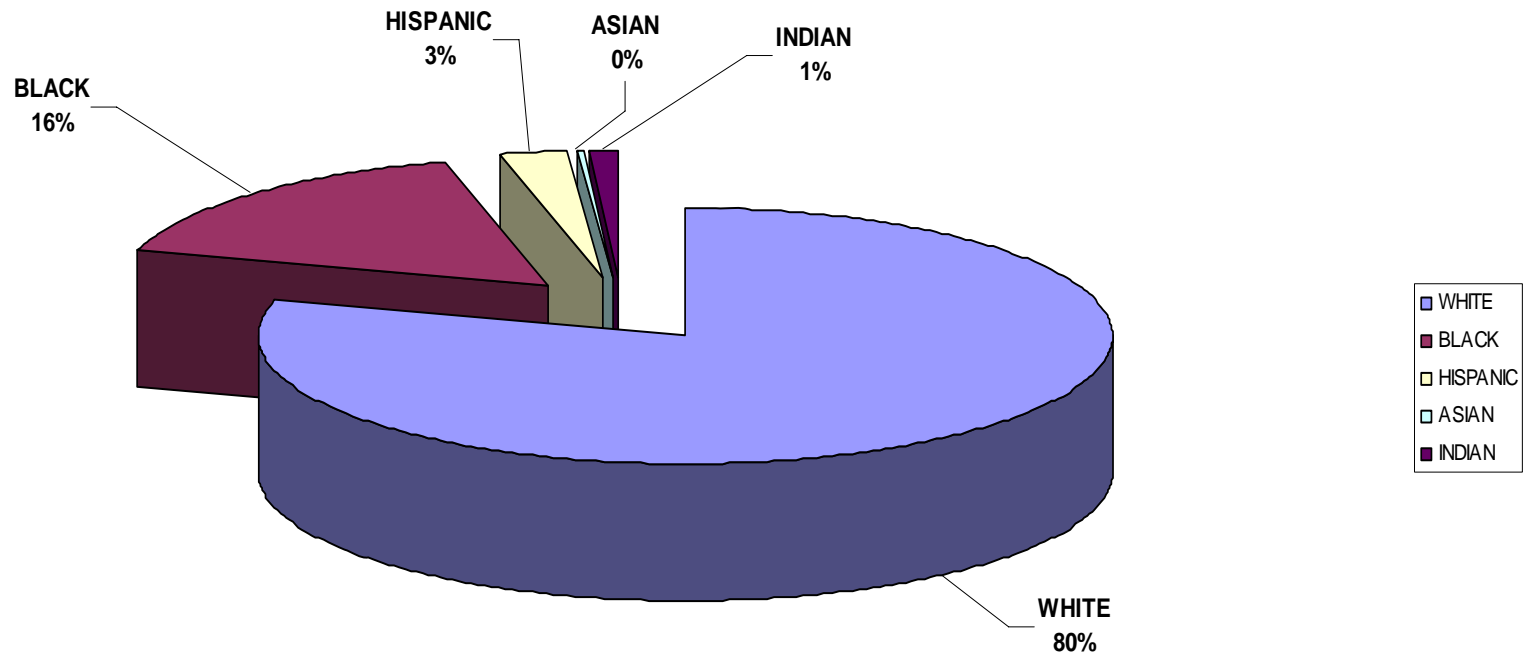
Permanency Outcomes

CHILD ABUSE & NEGLECT CASE CLOSING OUTCOMES
2008



Ethnicity of Greene County Children

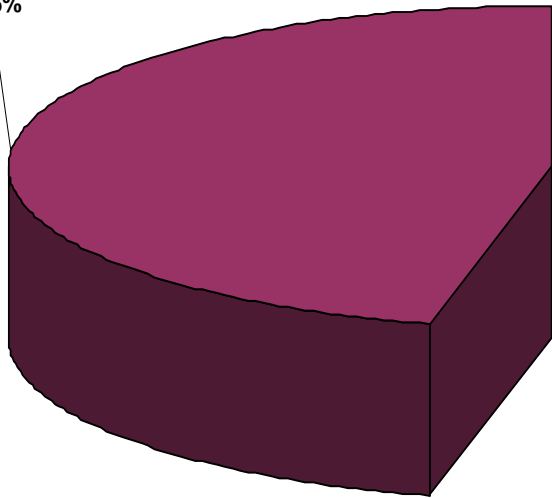
ETHNICITY OF GREENE COUNTY FOSTER CHILDREN
AS OF JANUARY 1, 2009



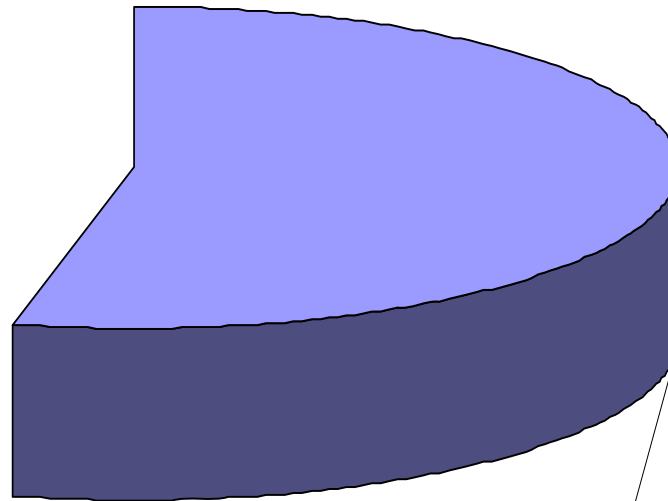
Gender of Greene County Children

GENDER OF GREENE COUNTY FOSTER CHILDREN
AS OF JANUARY 1, 2009

FEMALE
46%



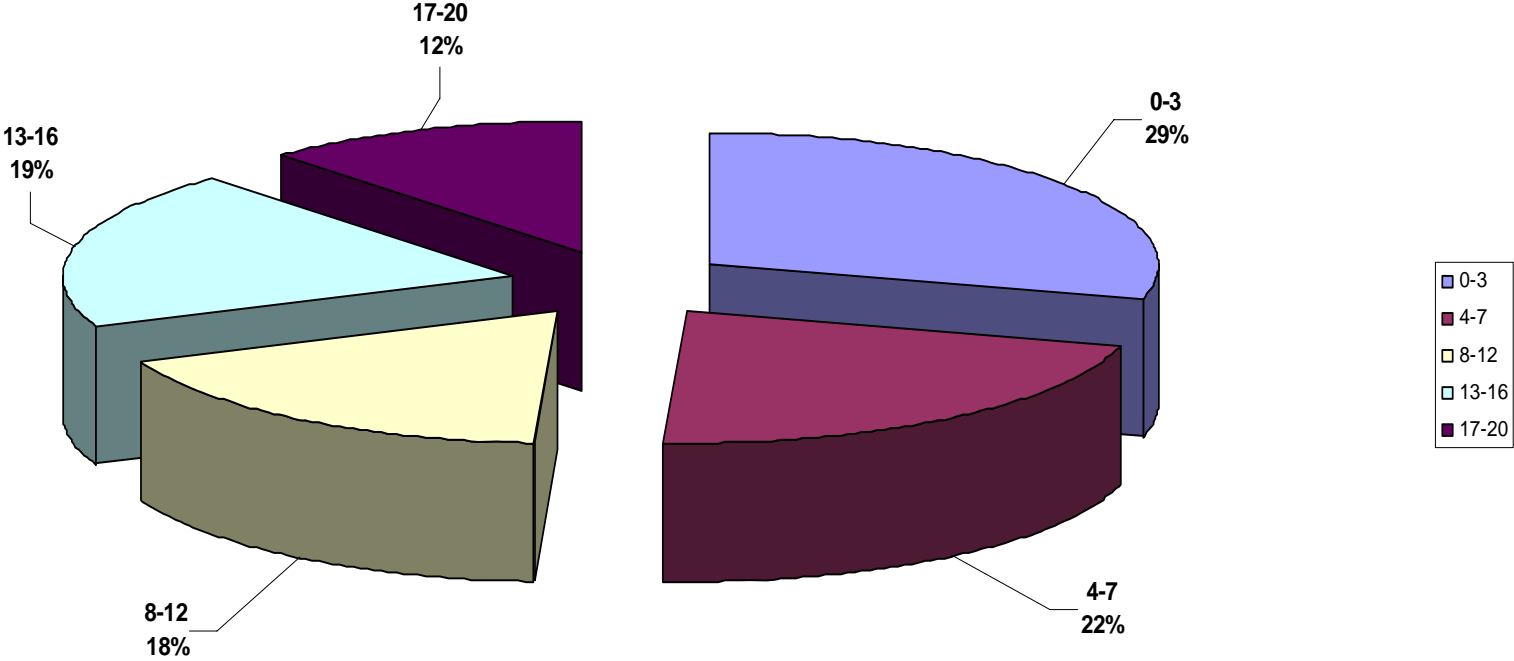
MALE
54%



MALE
FEMALE

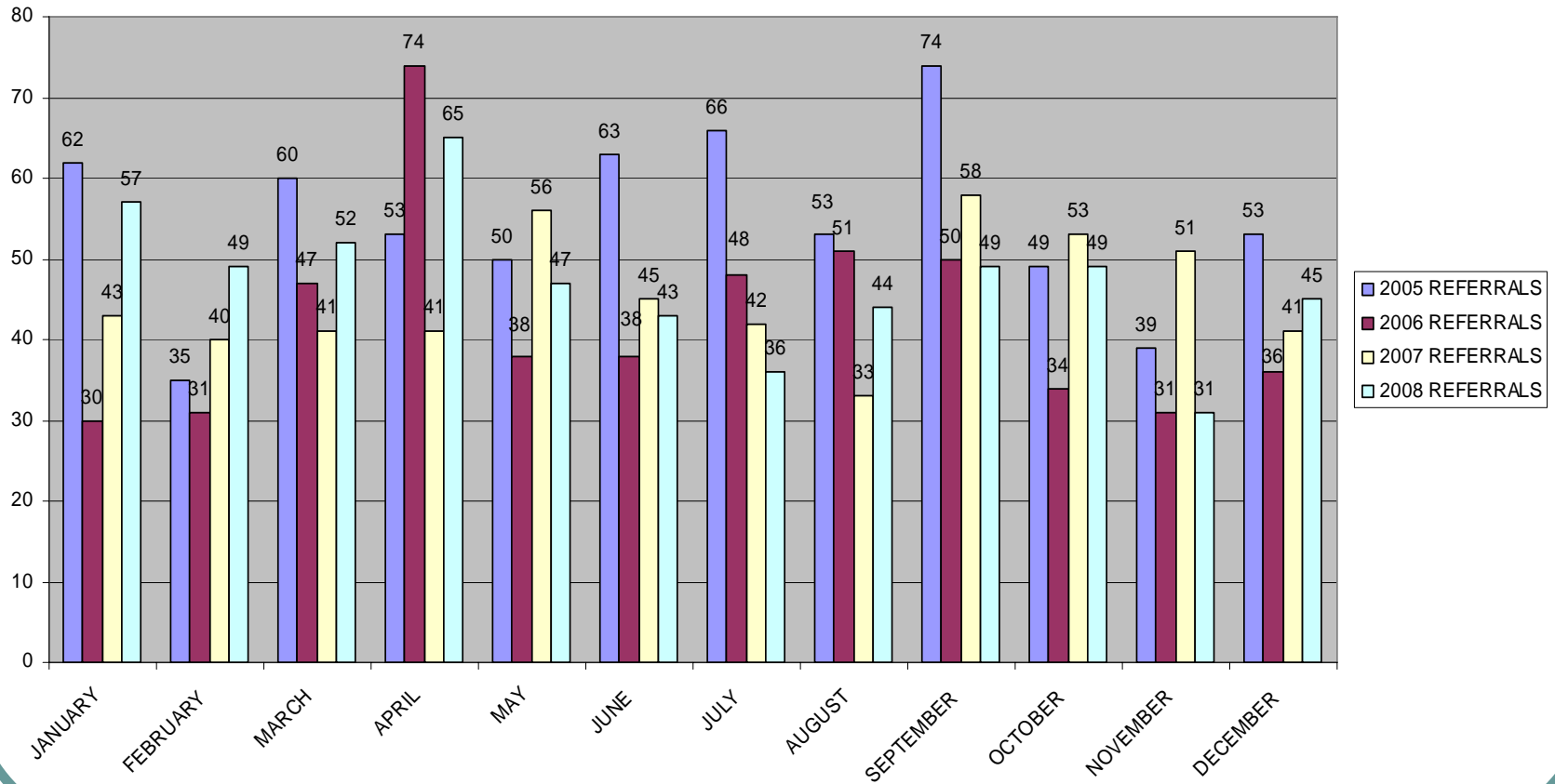
Ages of Greene County Children

GREENE COUNTY CHILDREN IN FOSTER CARE BY AGE GROUP
AS OF JANUARY 1, 2009



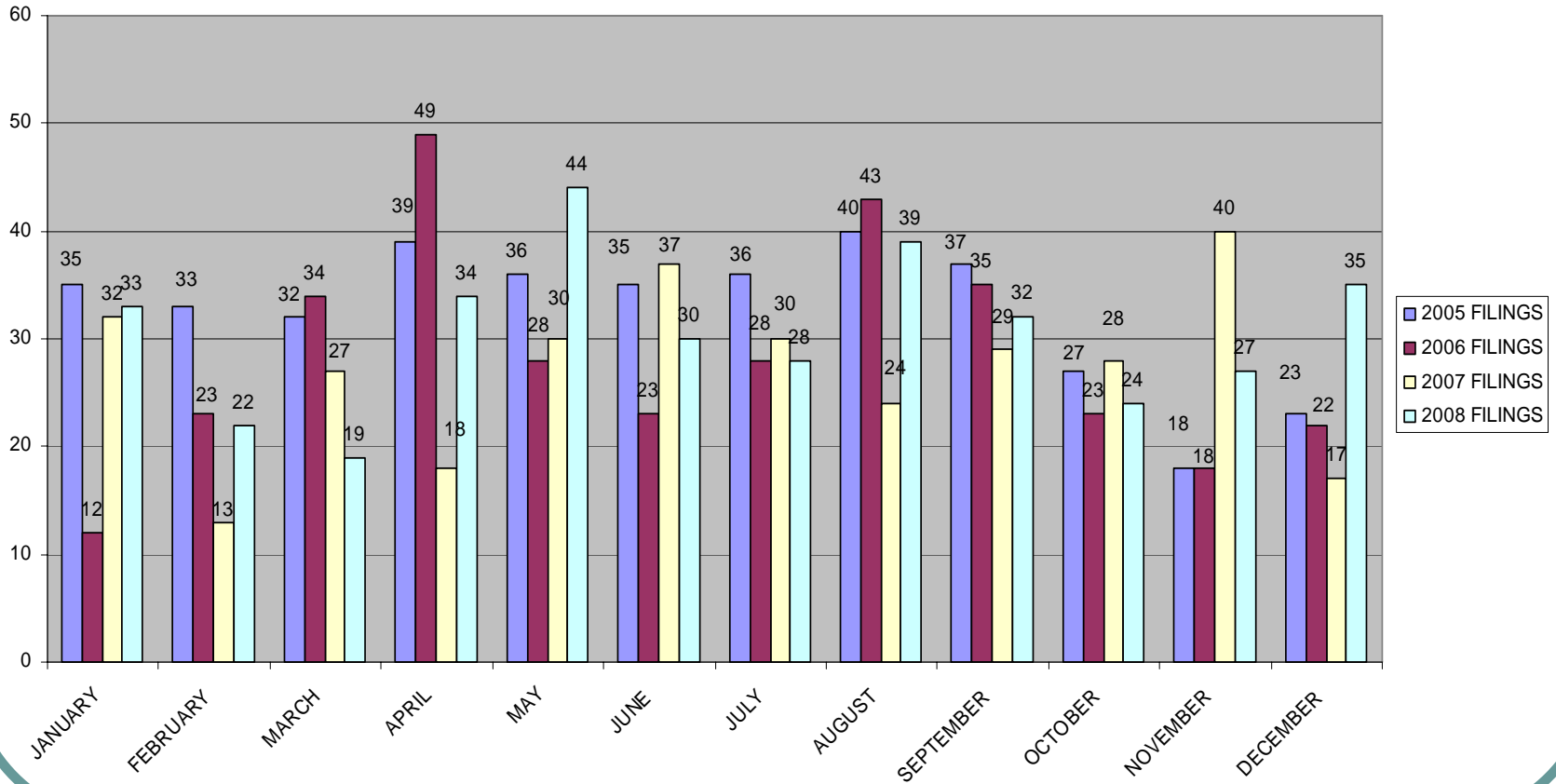
4 Year Referral Comparison

REFERRALS FOR 2005, 2006, 2007 & 2008



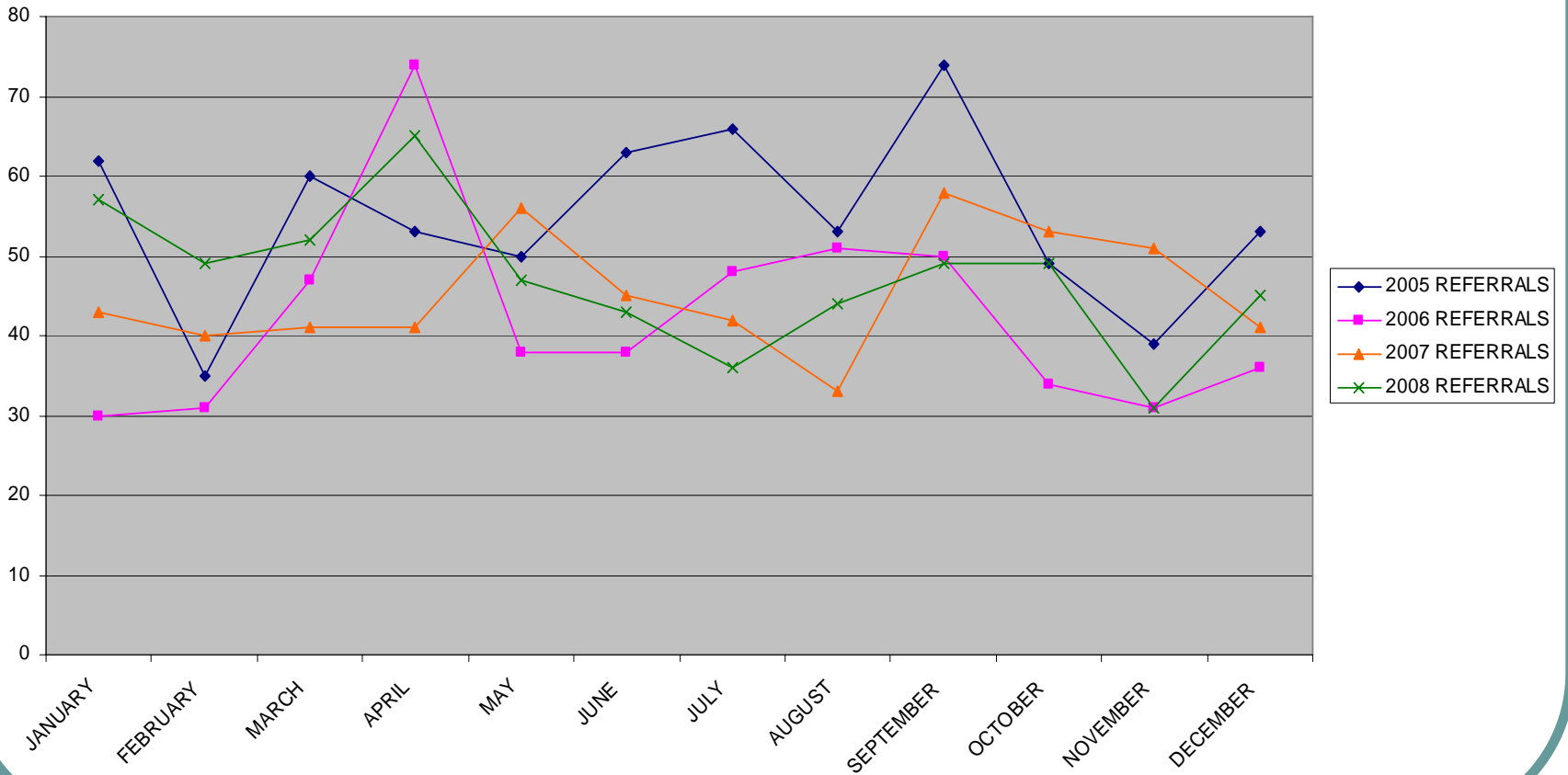
4 Year Filing Comparison

FILINGS FOR 2005, 2006, 2007 & 2008



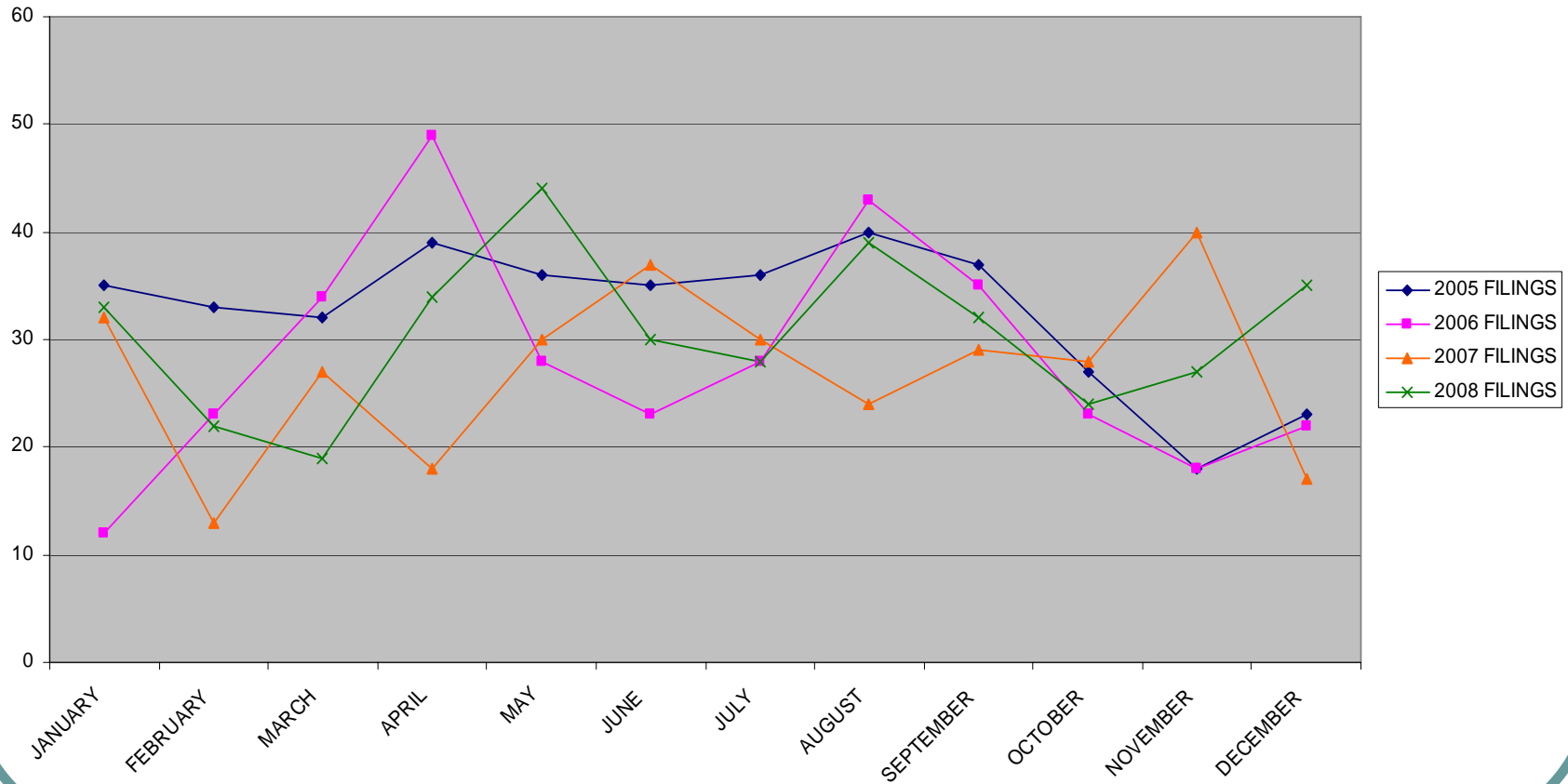
4 Year Referral Comparison

REFERRALS FOR 2005, 2006, 2007 & 2008



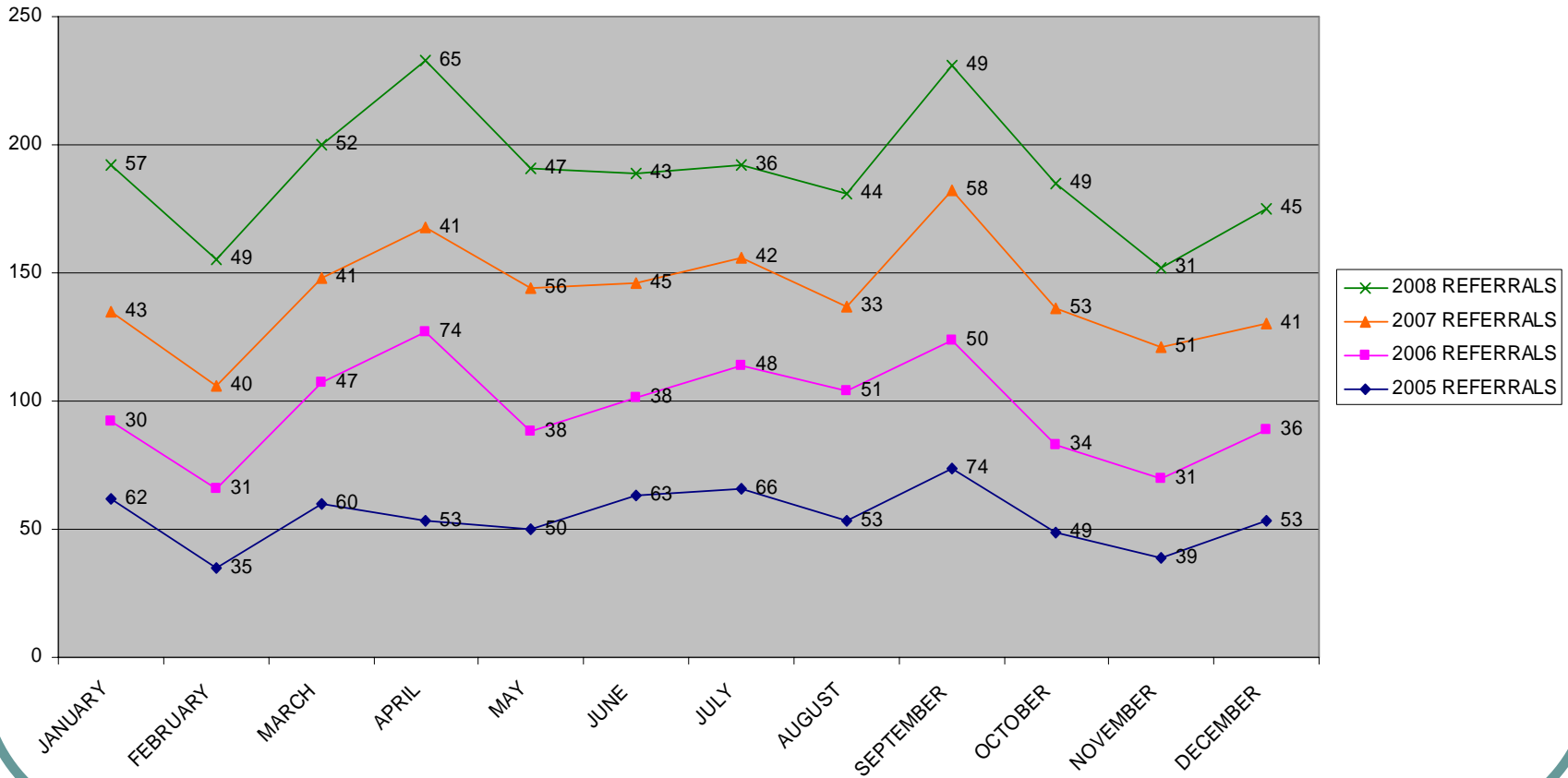
4 Year Filing Comparison

FILINGS FOR 2005, 2006, 2007 & 2008



4 Year Referral Trends

REFERRALS FOR 2005, 2006, 2007 & 2008



4 Year Filing Trends

FILINGS FOR 2005, 2006, 2007 & 2008

