

GREENE COUNTY TREATMENT COURT



General Overview

- Treatment courts are problem-solving courts that use a combination of accountability, treatment and other services to support and compel drug-using or drug-involved offenders to change their lives.
- Treatment Court team works together to help offenders find restoration in recovery and become productive citizens.
- It is a “voluntary” program which requires regular court appearances and attendance at treatment sessions.
- It includes, but is not limited to, drug testing, substance abuse counseling, PO visits and community support meetings.

Entrance into the Program

- Referrals for Treatment Court are made by the Prosecuting Attorney, defense attorneys, probation officers and police officers that are familiar with the program.
- Final approval for admission rests with the Treatment Court team consisting of the PA, Probation Officers, Treatment Providers and the Treatment Court Administrator, presided over by the Treatment Court Judge.

Entrance Criteria

Eligibility

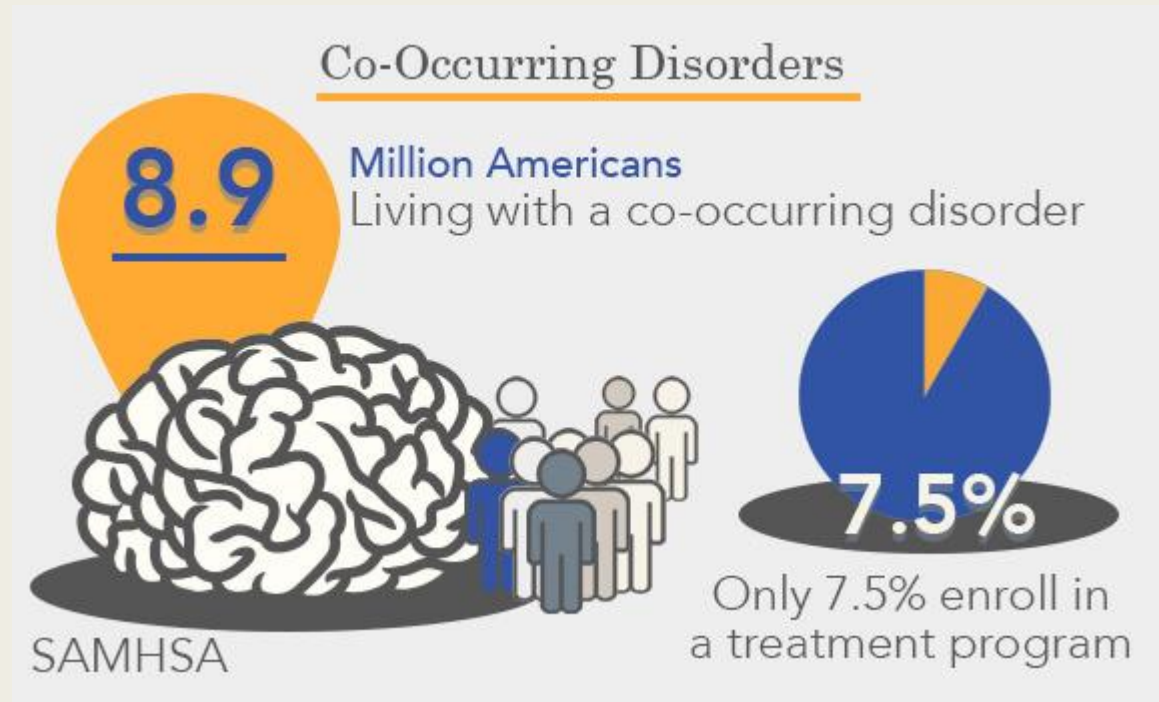
- Charged with felony possession, distribution or intent to distribute controlled substance, or is charged with burglary to support a drug habit;
 - *Diagnosed as seriously mentally ill with SUD*
 - *Current or past Service Member in the U.S. Armed Forces;*
- Reside in Greene County;
- 17 years of age or older;
- RANT® (Risk and Needs Triage) Assessment score of *High Risk/High Need* (Quadrant 1) or *High Risk/Low Need* (Quadrant 3).

Disqualification

- Charged with a violent crime or crime involving use of a weapon;
- Current charge or past conviction of a dangerous felony or a felony sex offense;
- Service Members discharged while in Entry Level Status;
- Previously participated in treatment court;
- Previously completed one year of treatment (217.362 RSMo) in DOC in case being screened for eligibility.

Treatment Court Divisions

- Adult
- Co-Occurring
- DWI
- Family
- Veterans



Treatment Court Team Members

- Treatment Court Judge
- Prosecuting Attorney
- Probation Officer
- Treatment (counselor and/or case worker)
 - *SUD*
 - *Mental Health*
- Social Worker
- Treatment Court Administrator
- Treatment Court Clerk(s)
- Sponsor and/or Mentor
- Additional team members:
 - *Defense Attorney*
 - *Veterans Justice Outreach Specialist/Coordinator*

Program Requirements

Treatment

- Individual Treatment Plans
- Individual Counseling Sessions
- Group Counseling Sessions
- Education Classes
- Trauma
- MRT
- MAT (Medicated Assisted Treatment)



Program Requirements

Community Support Meetings

- 1-2 meetings per week depending upon phase of the program
- Sponsor or mentor, if appropriate
- AA, NA, SMART Recovery or Celebrate Recovery
- Prosocial activities



Program Requirements

Drug Testing

- Must call EVERY day...365 days a year. Will be assigned a PIN
- 1-3 random tests per week
- Additional random tests can be added
- Standard testing panel includes: AMP, METH, THC, COC, BZO, OPI, EtG, OXY, BUP, FENT, MDMA, MTC w/ validity
- Specialty testing assays can be added (K2, Tramadol, etc)



Program Requirements

Treatment Court Fees

- \$2,500 program fee
- \$100 confirmation fee if UA confirmed positive

Employment/School

- Obtain and maintain verifiable full-time employment
- Obtain high school diploma or GED/HiSET

Sobriety Requirements

- 14 – 90 days, depending on program phase

Progression thru the Program

- **Minimum** program completion time is 18 months.

- 5-Phase Program, as they phase up program requirements decrease.
 - Phase 1: Two months
 - Phase 2: Three months
 - Phase 3: Three months
 - Phase 4: Four months
 - Phase 5: Six months

- Testing requirements can be adjusted according to phase.

- Have to meet objectives in each phase in order to move up a phase.

Incentives, Sanctions & Therapeutic Adjustments

Incentives

- Promotion to next Phase
- Early dismissal at Treatment Court appearances
- Less frequent Treatment Court appearances
- Certificate of Achievement
- Gift cards or activities
- Graduation from Treatment Court
- Limited Driver's License

Sanctions

- Increased drug testing
- Additional community service hours
- More frequent court appearances
- Essays on particular topics
- Reprimand from the Judge
- Reduction to previous phase
- Jail sanction
- CODS (Court Ordered Detention Sanction)
- Termination

Graduation Requirements

- Attendance at all required treatment sessions, community support meetings and meetings with Probation Officer.
- Development of an aftercare plan.
- Minimum of 90 days of sobriety.
- Consistency in complying with the terms of the treatment plan.
- Stable housing and employment – unless exempt due to physical and/or mental health conditions.
- All community service hours completed.
- Engaged in community support groups, if appropriate.
- Completion of GED/HiSET – unless exempt due to physical and/or mental health conditions.
- All program fees, restitution, and fines paid in full.

Digital Resources



Who We Are

The Greene County Drug Court was established in 1998. Its core framework was based on *Defining Drug Courts: The Key Components* (10 Key Components), which was published in 1997 by the National Association of Drug Court Professionals (NADCP).

In January 2003, the ADA partnered with the Greene County DWI Court to implement the Serious and Repeat Offender Program (SROP) pilot project. It is the most intense level of SATOP treatment services and was designed to address the substance abuse issues of individuals with felony alcohol-related traffic convictions.

In 2018, the treatment court statute was revised. In April 2019, the Local Rule was amended to dovetail with the change in statute, renaming the divisions of our Treatment Court to comply with the statute.

Treatment Court Commissioner

Kevin Austin has been the Treatment Court Commissioner for the 31st Judicial Circuit in Greene County since 2018. He is a member of the Order of the Coif, Missouri Law Review, and the Missouri Treatment Courts Coordinating Commission. He attended law school at the University of Missouri.

Before he was appointed Treatment Court Commissioner, he served as a member of the House of Representatives, where he chaired the Judiciary and Ethics Committee and served as the Assistant Floor Leader.

Digital Resources



Greene County Treatment Court



Contact Us

Manager: Ashley Davis

Phone: (417) 829-6159

Email: Ashley.Davis@courts.mo.gov

Web: greenecountycourts.org/treatment-court

Treatment courts are problem-solving courts that use a combination of accountability, treatment, and other services to support and compel drug-using or drug-involved offenders to change their lives.



Mission Statement

The mission of the Greene County Treatment Court is to enhance public safety by reducing criminal activity associated with substance abuse and addiction by placing the offender into a judicially supervised program that provides comprehensive treatment, life skills training, and accountability for behaviors, thereby assisting offenders to become sober, law-abiding members of our community.

Treatment/Testing Providers

Treatment and testing are an integral part of the program. Your treatment can be faith-based or non-faith-based and is determined by the treatment court division in which you are enrolled. The providers for all divisions are:

- ✓ Burrell Behavioral Health
- ✓ Heartland Center for Behavioral Change
- ✓ Higher Ground Recovery Center
- ✓ Preferred Family Healthcare
- ✓ Recovery Outreach Services
- ✓ Veterans Administration
- ✓ Tomo Drug Testing

RANT® Assessment

A Risk and Needs Triage (RANT®) assessment is a tool designed to help judges and other criminal justice professionals place adult drug offenders into the appropriate care setting. By matching offenders to appropriate services, the RANT helps optimally target resources for improved public safety and health outcomes.

“Recovery is not for people who need it; it’s for people who want it.”

Program Phases

There are five (5) phases in each treatment court division. You must complete all the requirements of a phase before being promoted to the next phase. Each phase has different requirements for the number of court appearances, treatment, PO appointments, community service hours, and other requirements.

The program will last a **minimum of 18 months.**

Why is this program important?

Even though this program requires a lot of work and is challenging, participants who complete it are given the opportunity to stay out of jail or prison. More importantly, you can begin living a life that makes this a safer community and makes you a healthier and more productive person!

What is required of participants?

All defendants ordered to complete this program are required to participate in:

- ✓ Substance use treatment
- ✓ Randomized weekly drug testing
- ✓ Attending frequent court reviews based on their phase in the program
- ✓ Attending community support meetings and activities
- ✓ Showing progress in their treatment plans and recovery
- ✓ Payment of program fees
- ✓ Obtaining and maintaining stable housing and employment
- ✓ Continued sobriety

What is the cost of the program?

All Missouri Treatment Courts are mandated to charge a fee that helps pay for substance use treatment and drug testing. Participants will not be held back in their phase due to financial hardship. These cases will be discussed by the treatment court team on a case-by-case basis.

- ✓ \$2,500 program fee
- ✓ \$375 SATOP Assessment fee*
- ✓ \$150 SROP administrative fee*
- ✓ \$100 drug test confirmation fee**

*DWI Court only **Lab confirmed positive test