

**FOR IMMEDIATE RELEASE**

**Sept. 25, 2025**

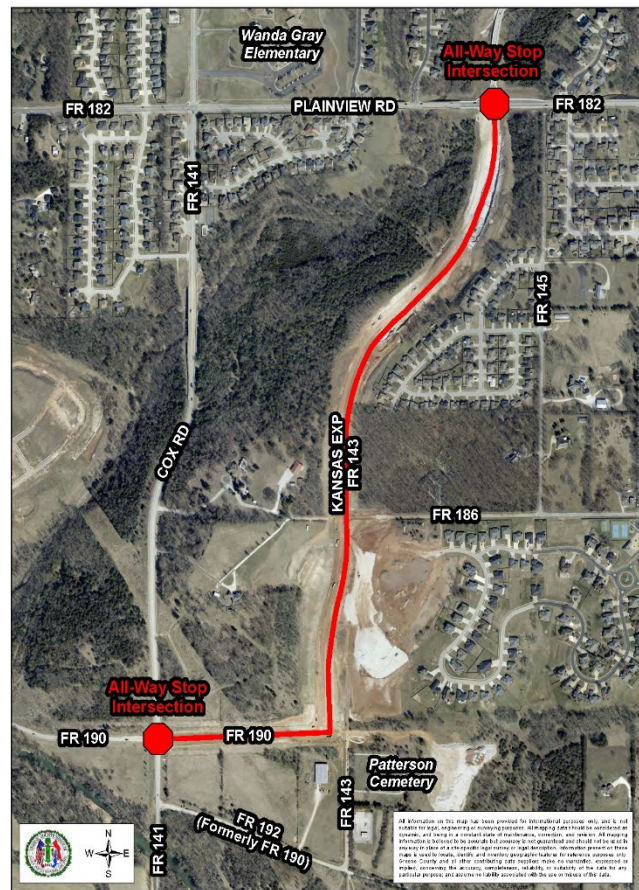
## **Kansas Expressway Extension Phase II opening**

*SPRINGFIELD, Mo.* – Phase II of the Kansas Expressway Extension in south Springfield will open to motorists between 9 and 10 a.m. on Friday, Sept. 26. Construction was completed on time and under budget. This is the last phase of the overall project.

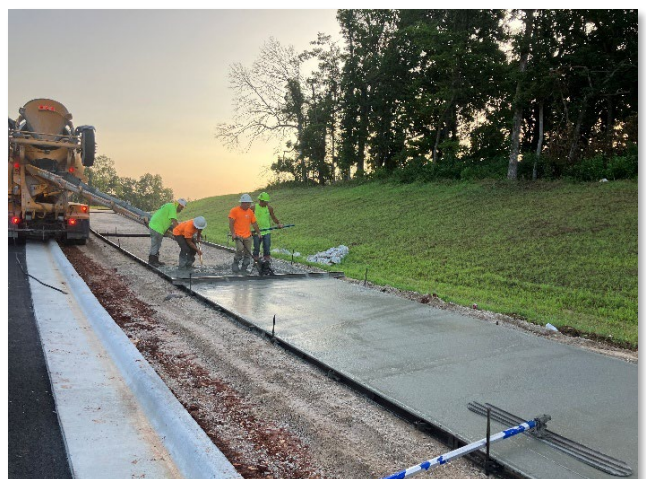
One mile of a new two-lane road was constructed and includes a new 10-foot wide concrete pedestrian and bicycle path adjacent to the roadway. It will extend the Kansas Expressway (Farm Road 143) corridor south of Plainview Road (Farm Road 182) down to Farm Road 190.

The extension also includes a new east/west connection on Farm Road 190 to Cox Road (Farm Road 141) at the southern project limit to provide traffic congestion relief.

A new four-way stop has been installed at the intersection of Cox Road (FR 141) and Farm Road 190. The road's speed limit is 40 mph which is consistent with the existing Kansas Expressway, north of the project.







Contractors with Emery Sapp & Sons began work in January 2024 and continued over the past 21 months through September 2025. More than 330,000 cubic yards of dirt and rock were excavated to build the new roadway alignment. The total cost of the project was \$12.5 million. 80% of the project was paid with federal transportation funds and 20% was paid by Greene County.

Phase I was completed in Feb. 2024 and included the construction of a new two-lane road beginning at Republic Road with turning lanes at major intersections, new stormwater improvements, and a pedestrian and bicycle path along the corridor.

Planning for the Kansas Expressway Extension began nearly four decades ago. In the early 1980's both Greene County and the City of Springfield recommended a major thoroughfare plan south of Route M.

After several feasibility studies and environmental assessments in the following years, the project was approved, and construction began in 2022.

###

*Greene County is the State of Missouri's fourth most populous county, serving approximately 295,000 people. Its mission is to provide all citizens of Greene County, including those in its cities, a safe and thriving community through excellent customer service, unparalleled dedication, and the efficient use of taxpayer dollars. The Greene County Commission is the executive body of Greene County operating under guidelines established in the Revised Statutes of the State of Missouri. Within that authority the Commission enacts ordinances, resolutions and policies, supervises the activities of county departments, fixes salaries, adopts the annual budget, provides for construction and other services, and conducts hearings on planning and zoning matters.*

**For additional information contact the Greene County Public Information Office at 417-844-4311 or [pio@greencountymo.gov](mailto:pio@greencountymo.gov).**