



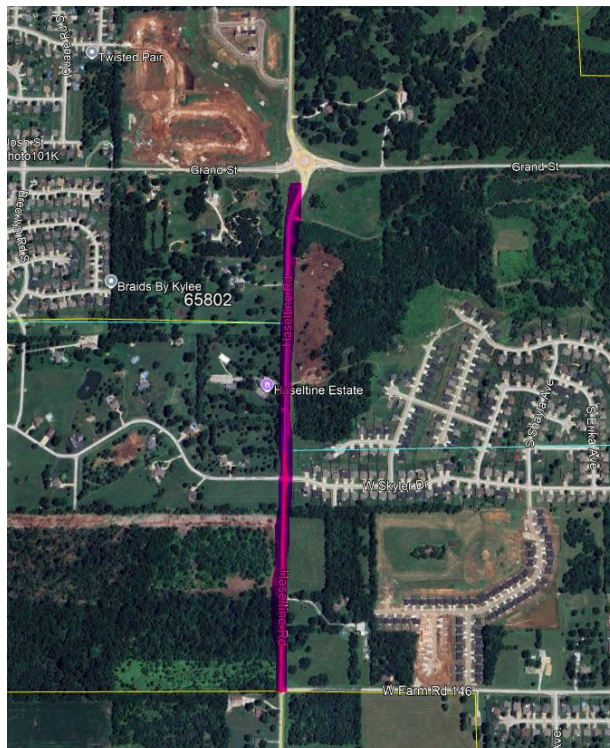
FOR IMMEDIATE RELEASE

Apr. 16, 2026

Hazeltine Road (FR 115) to Close for Full Roadway Reconstruction Beginning April 20

SPRINGFIELD, MO – The Greene County Highway Department will begin a full-depth roadway reconstruction project along Hazeltine Road (Farm Road 115) starting on **Monday, April 20**, with work scheduled to continue through **April 30**, weather permitting.

The project will cover approximately 0.7 miles of Hazeltine Road, extending from the roundabout at Farm Road 140 south to Farm Road 146.



About the Work

Crews will perform a "pavement zipping" operation, which involves milling the existing asphalt pavement and then recompacting the material to create a stable base for a new asphalt overlay. While this method takes longer than a traditional "mill and fill," it reconstructs the entire pavement structure, producing a significantly more durable and longer lasting roadway.

Because the equipment can only process about four feet of pavement at a time, the roadway must be closed to thru-traffic for the duration of the work. Crews will work within an area of approximately 500 feet each day.

Road Closure Details

The full roadway closure will remain in place continuously, including overnight hours, even when active work is not occurring. A single lane closure is not feasible because the operation impacts the full roadway width and progresses slowly.

Access through the work zone will be maintained for emergency vehicles and for local residents who live near the impacted area. Residents will still be able to enter and exit any property located inside the work zone by driving around the barricades on either end.

Brief delays should be expected when work is occurring directly in front of a driveway or entrance. Highway Department staff will be on site to assist motorists and coordinate access as needed.

Public Notifications

The Highway Department has already notified emergency responders, school districts, law enforcement, and other affected agencies. Staff will also meet in person with property owners who have direct driveway access along this corridor over the next several days.

Electronic message boards have been placed at both ends of the FR 115 corridor to provide advance notice to motorists and allow time to plan alternate routes.

Paving to Follow

Once the pavement zipping operation is complete, the Highway Department's asphalt paving contractor, APAC, is scheduled to begin placing the new asphalt surface on **Monday, May 4**. The paving work is expected to take approximately one to two days to complete.

Project Benefits

Hazeltine Road is a heavily traveled corridor and the existing pavement is showing significant wear. Upon completion, the project will deliver a fully reconstructed roadway structure designed to serve the traveling public for many years with minimal maintenance needs.

###

Greene County is the State of Missouri's fourth most populous county, serving approximately 308,000 people. Its mission is to provide all citizens of Greene County, including those in its cities, a safe and thriving community through excellent customer service, unparalleled dedication, and the efficient use of taxpayer dollars. The Greene County Commission is the executive body of Greene County operating under guidelines established in the Revised Statutes of the State of Missouri. Within that authority the Commission enacts ordinances, resolutions and policies, supervises the activities of county departments, fixes salaries, adopts the annual budget, provides for construction and other services, and conducts hearings on planning and zoning matters.

For additional information contact the Greene County Commission's Public Information Office at 417-844-4311 or pio@greencountymo.gov.