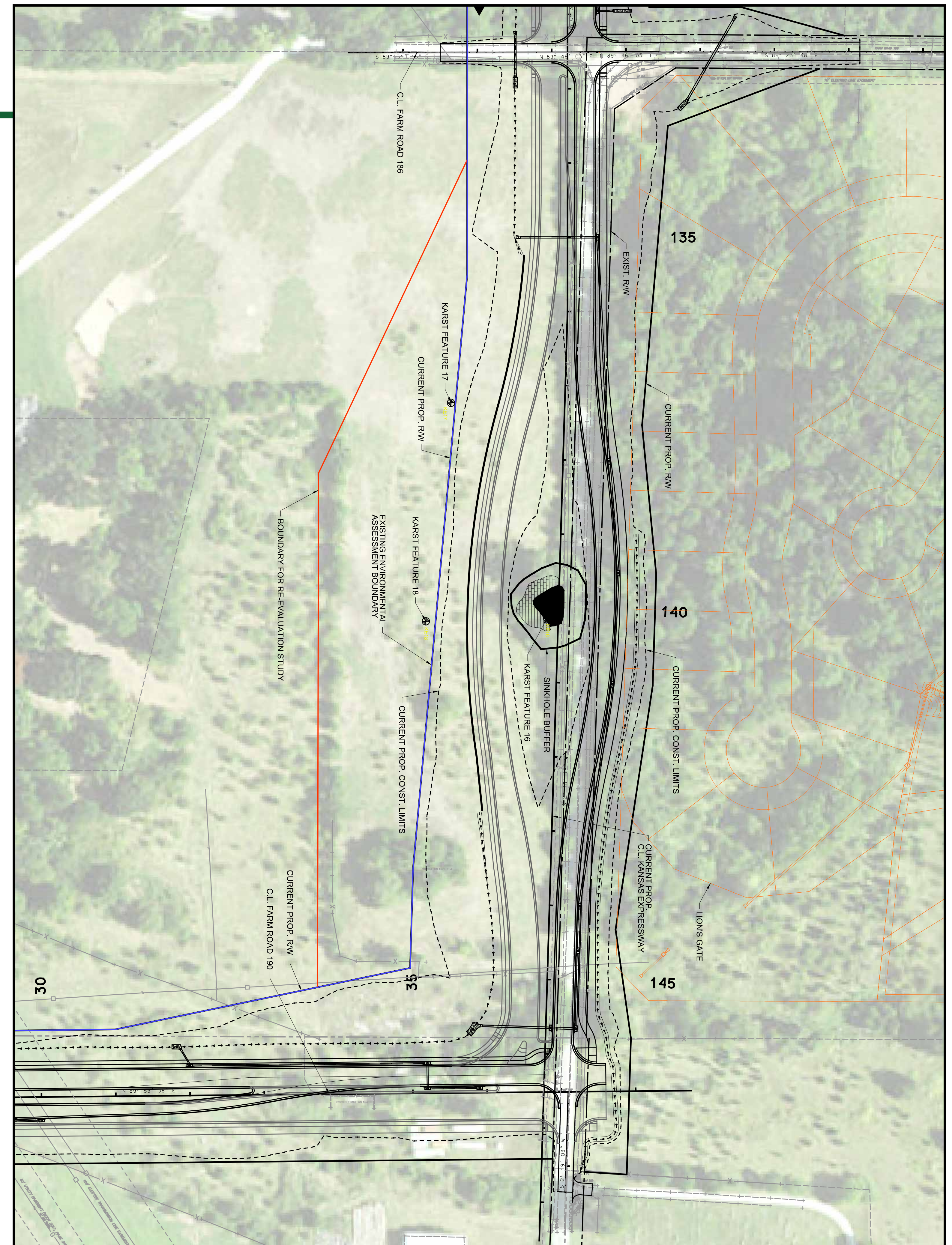
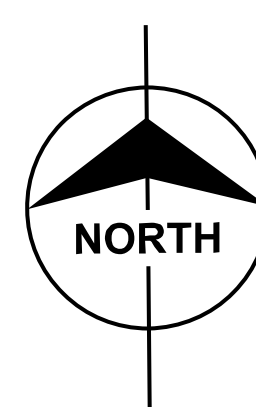


KANSAS EXTENSION RE-EVALUATION LOCATION

The re-evaluation location extends between Farm Road 186 and Farm Road 190.

ALIGNMENT EVALUATED IN THE ENVIRONMENTAL ASSESSMENT

The current alignment, as shown, would straddle a karst feature, labeled KE-16.



KANSAS EXTENSION RE-EVALUATION LOCATION

The re-evaluation location extends between Farm Road 186 and Farm Road 190.

REVISED ALIGNMENT USED FOR RE-EVALUATION

The revised roadway alignment, as shown, would avoid karst feature KE-16.

